

**Table 1: Weekly Perimeter Air Monitoring Summary**  
**Allied Textile Printing Site**  
**Paterson, Passaic County, New Jersey**  
**October 14 through 18, 2024**

Date	Air Monitoring Instrument Number	Action Level Exceeded? <sup>1</sup>	Work Day 15-Minute TWA Concentration Range (µg/m <sup>3</sup> )
14-Oct-24	ASL01	N	No Site Work Conducted
	ASL02	N	No Site Work Conducted
	ASL03	N	No Site Work Conducted
	ASL04	N	No Site Work Conducted
15-Oct-24	ASL01	N	No Site Work Conducted
	ASL02	N	No Site Work Conducted
	ASL03	N	No Site Work Conducted
	ASL04	N	No Site Work Conducted
16-Oct-24	ASL01	N	0.5 to 18.4
	ASL02	N	0.8 to 4.5
	ASL03	N	0.5 to 3.2
	ASL04	N	0.5 to 73
17-Oct-24	ASL01	N	1.3 to 60.8
	ASL02	N	4.1 to 11.6
	ASL03	N	1.8 to 14.8
	ASL04	N	2.2 to 16.2
18-Oct-24	ASL01	N	0.1 to 23.1
	ASL02	N	5.4 to 13
	ASL03	N	3.2 to 45
	ASL04	N	6.2 to 32.4

**Notes:**

The EPA uses air monitors to track small particles in the air called PM<sup>10</sup>, which are less than 10 micrometers in size. These particles can include dust, dirt, smoke, or asbestos fibers. The air monitors measure the average amount of PM<sup>10</sup> in the air over 15 minutes. If the amount of PM<sup>10</sup> is above 150 µg/m<sup>3</sup>, the monitors alert the EPA and workers on-site. If this happens, all site activities will stop, results are reported to the EPA, and dust control measures are re-evaluated. It's important to note that high levels of PM<sup>10</sup> do not necessarily mean there is asbestos in the air. The monitors only measure the amount of particles, not what they are made of.

Air monitoring results highlighted in YELLOW show that an air monitor measured PM<sup>10</sup> above the EPA's action level.

<sup>1</sup>Action level utilized on-site is currently 150 µg/m<sup>3</sup> with PM<sub>10</sub>, which is compared to the average air monitoring measurement over a 15-minute period. If the action level is exceeded for a 15-minute period, on-site safety procedures are to suspend site activities, report results to the EPA On-Scene Coordinator and re-evaluated dust suppression measures.

Air monitoring measurements (15-minute TWA concentrations) have been averaged over the total work day.

Air monitoring is not performed during inclement weather conditions/rain and thunderstorms.

**Abbreviations:**

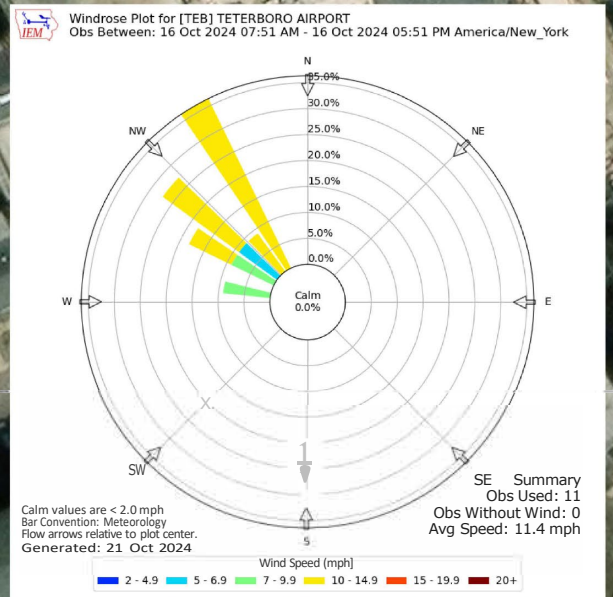
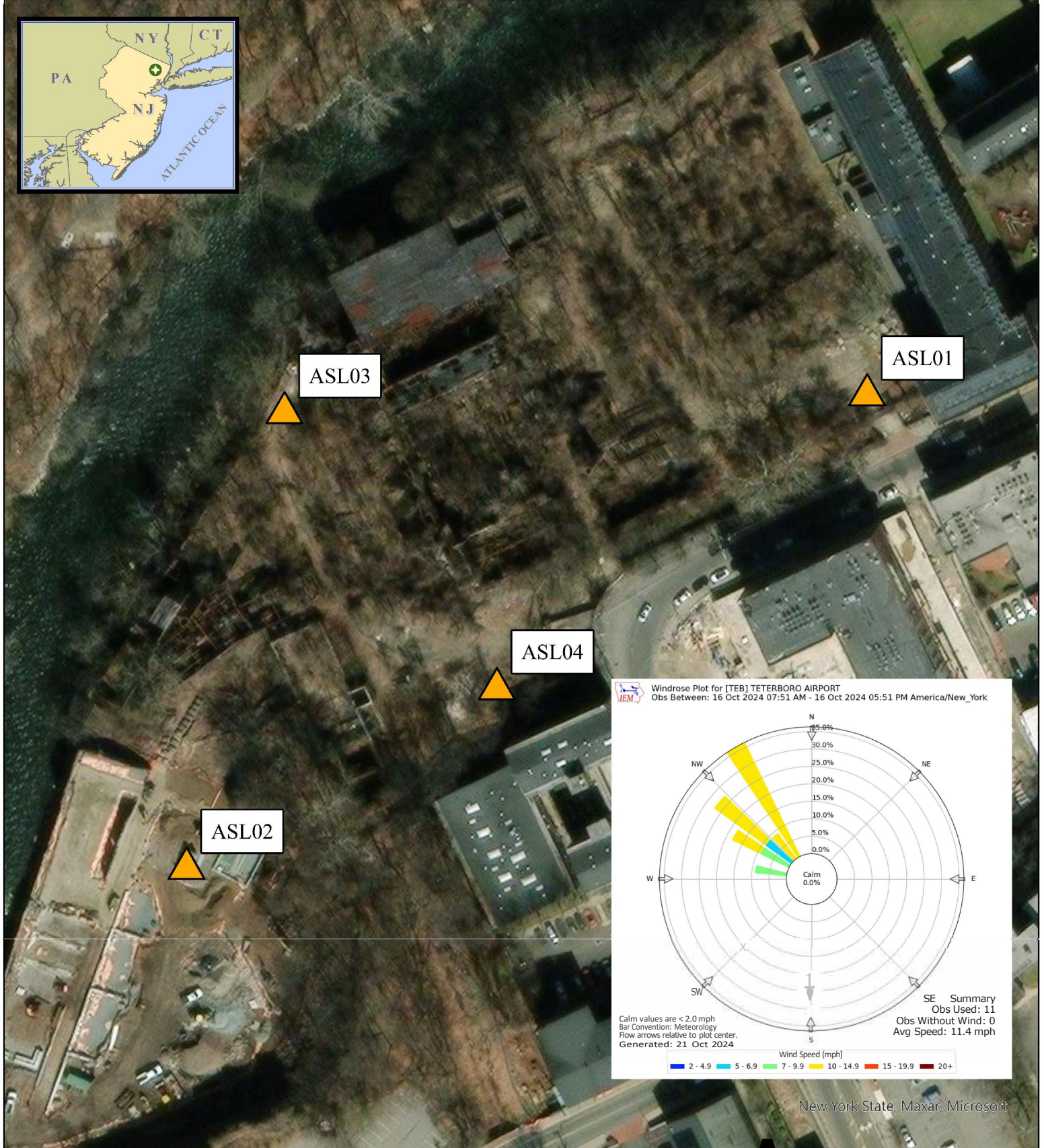
EPA - United State Environmental Protection Agency

µg/m<sup>3</sup> - Micrograms per meter cubed

PM<sub>10</sub> - Particulate Matter, diameter 10 micrometers and smaller

TWA- Time weighted average

ASL -Air Station Location



New York State, Maxar, Microsoft

## Legend



Air Monitoring Location

### Notes:

1. Air monitoring locations are approximate.
2. ASL01 (North Gate; DustTrak II serial number [SIN]: 8530104213), ASL02 (Overlook Park Lower Fence Gate; DustTrak II SIN: 8530183802), ASL03 (North River Fence; DustTrak II SIN: 8530211314), and ASL04 (Exterior Colt Gun Building; DustTrak II SIN: 8530203306).
3. Air stations consist of a DustTrak II with a particulate matter smaller than 10 microns in diameter (PM10) impactor and a Gi!Air Plus for air asbestos air sampling.

0 25 50 100 150 200 Feet

**A**

## October 16, 2024 Air Monitoring Location Map

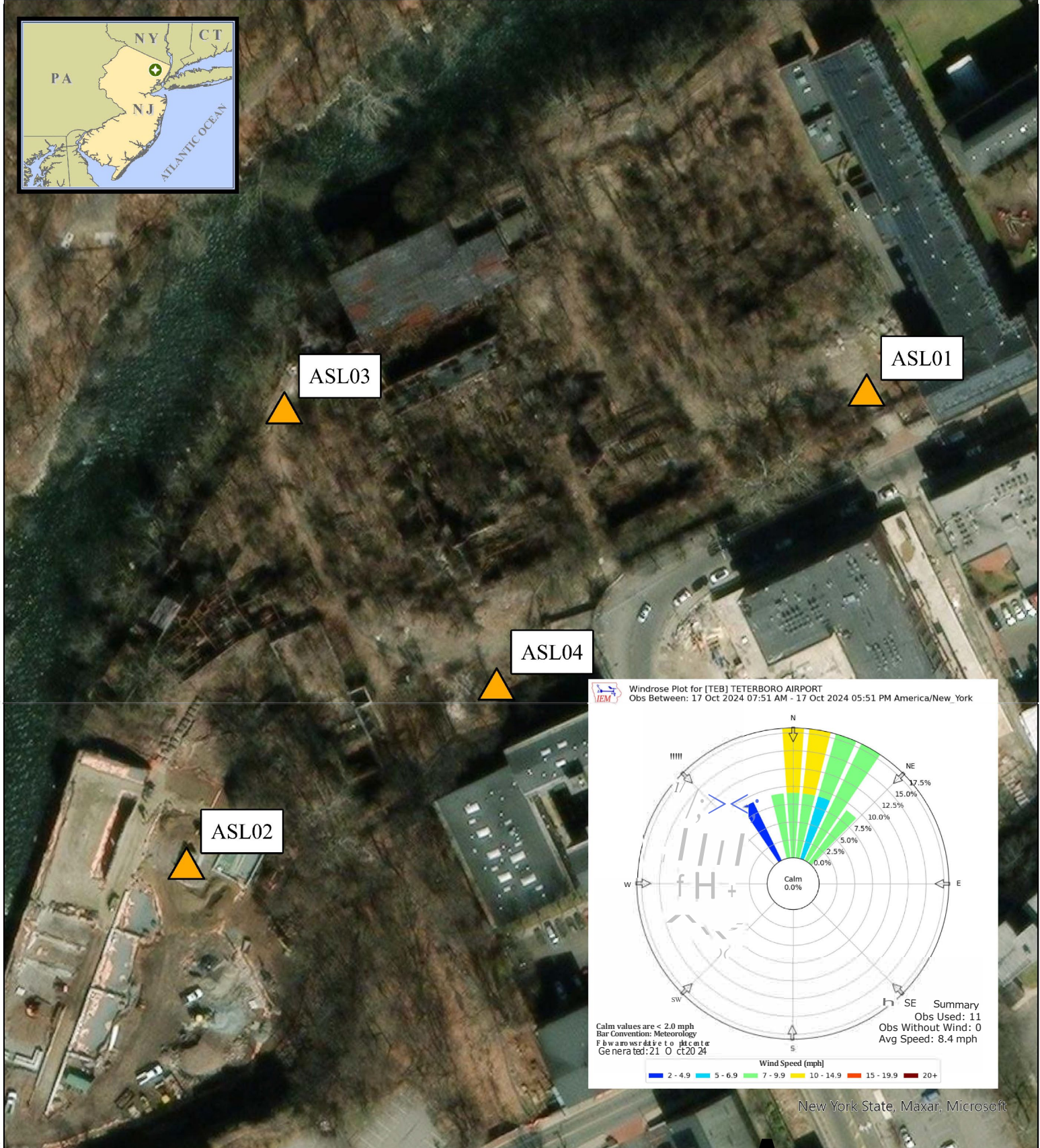
Allied Textile Printing  
Paterson, New Jersey

U.S. ENVIRONMENTAL PROTECTION AGENCY  
SUPERFUND TECHNICAL ASSESSMENT  
& RESPONSE TEAM VI  
CONTRACT# 68HE0325D0001

GISANALYST:  
EPAOSC: M. Tabajou  
START/SPM:  
CHARGE#:

**WESTON SOLUTIONS** Weston Solutions, Inc.  
Federal East Division





## Legend

### Air Monitoring Location

#### Notes:

1. Air monitoring locations are approximate.
2. ASL01 (North Gate; DustTrak II serial number [SIN]: 8530104213), ASL02 (Overlook Park Lower Fence Gate; DustTrak II SIN: 8530183802), ASL03 (North River Fence; DustTrak II SIN: 8530211314), and ASL04 (Exterior Colt Gun Building; DustTrak II SIN: 8530203306).
3. Air stations consist of a DustTrak II with a particulate matter smaller than 10 microns in diameter (PM10) impactor and a Gi!Air Plus for air asbestos air sampling.

0 25 50 100 150 200 Feet

**A**

## October 17, 2024 Air Monitoring Location Map

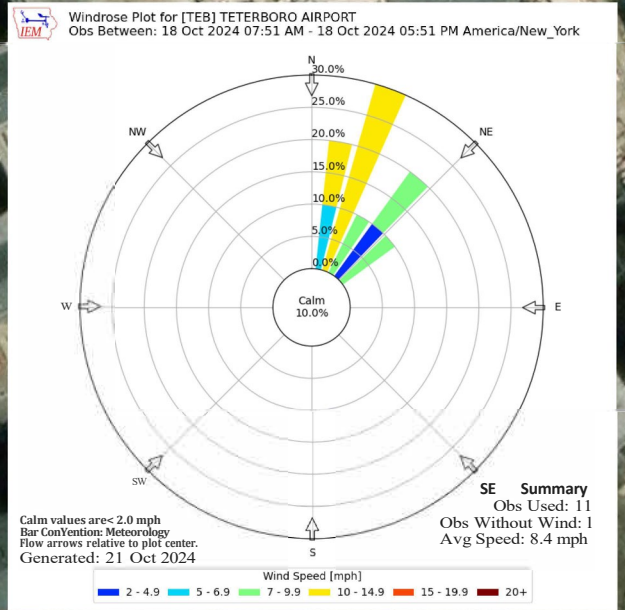
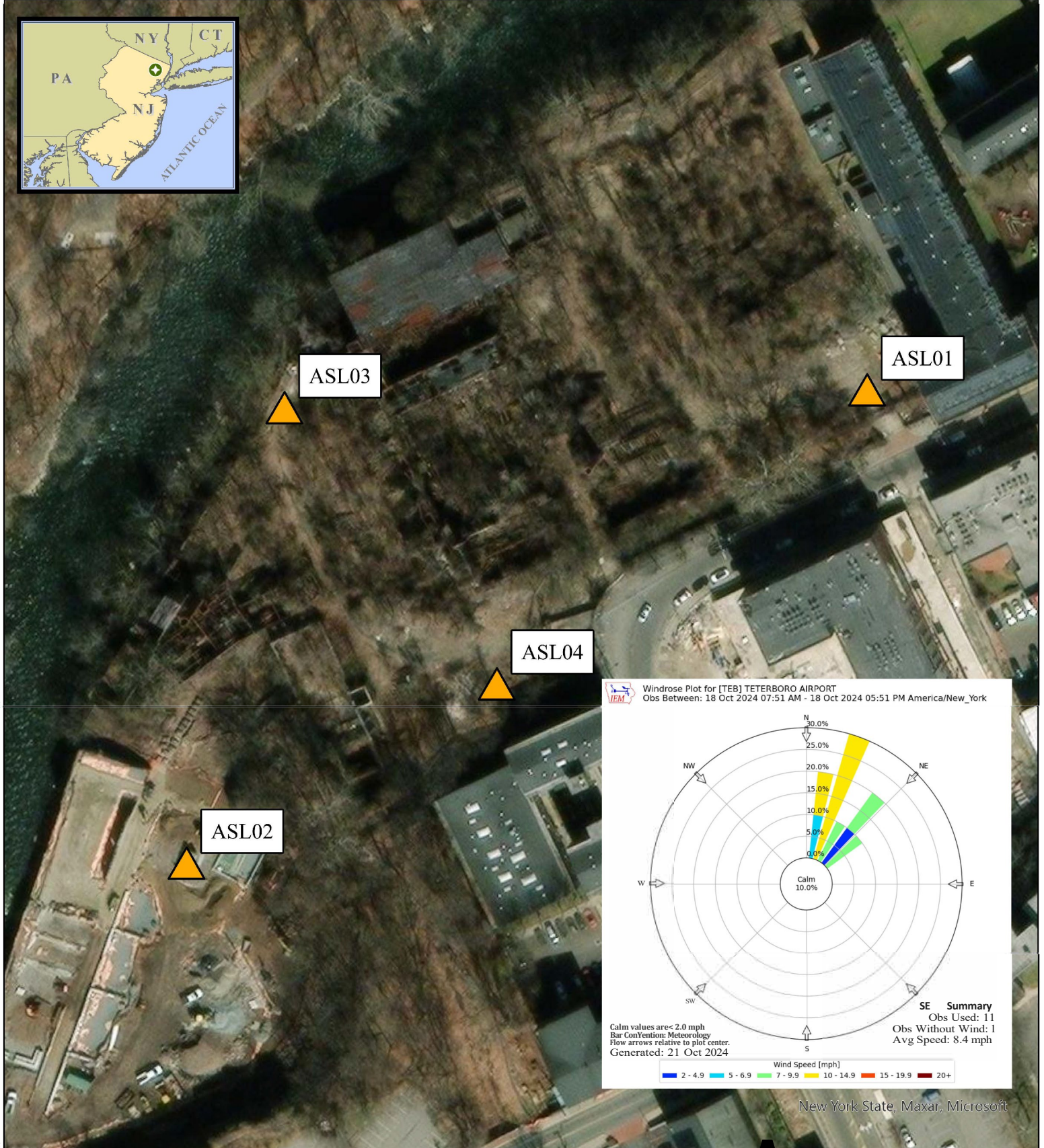
Allied Textile Printing  
Paterson, New Jersey

U.S. ENVIRONMENTAL PROTECTION AGENCY  
SUPERFUND TECHNICAL ASSESSMENT  
& RESPONSE TEAM VI  
CONTRACT# 68HE0325D0001

GISANALYST:  
EPAOSC: M. Taboaron  
START/STOP: 11/1/2024 9:50AM  
CHARGE#:

**WESTON SOLUTIONS** Weston Solutions, Inc.  
Federal East Division





New York State, Maxar, Microsoft

## Legend



Air Monitoring Location

### Notes:

- Air monitoring locations are approximate.
- ASL01 (North Gate; DustTrak II serial number [SIN]: 8530104213), ASL02 (Overlook Park Lower Fence Gate; DustTrak II SIN: 8530183802), ASL03 (North River Fence; DustTrak II SIN: 8530211314), and ASL04 (Exterior Colt Gun Building; DustTrak II SIN: 8530203306).
- Air stations consist of a DustTrak II with a particulate matter smaller than 10 microns in diameter (PM10) impactor and a Gi!Air Plus for air asbestos air sampling.

0 25 50 100 150 200 Feet

A

## October 18, 2024 Air Monitoring Location Map

Allied Textile Printing  
Paterson, New Jersey

U.S. ENVIRONMENTAL PROTECTION AGENCY  
SUPERFUND TECHNICAL ASSESSMENT  
& RESPONSE TEAM VI  
CONTRACT# 68HE032SD0001

GIS ANALYST:  
EPA OSC: M. Tabacong  
START/VI SPM:  
CHARGE#:

**WESTON SOLUTIONS** Weston Solutions, Inc.  
Federal East Division