

Table 1: Weekly Perimeter Air Monitoring Summary
Allied Textile Printing Site
Paterson, Passaic County, New Jersey
September 30 through October 4, 2024

Date	Air Monitoring Instrument Number	Action Level Exceeded? ¹	Work Day 15-Minute TWA Concentration Range (µg/m ³)
30-Sep-24	ASL01	N	6.4 to 16.1
	ASL02	N	10.6 to 14.6
	ASL03	N	0 to 14.1
	ASL04	N	18.2 to 39.2
1-Oct-24	ASL01	N	4.5 to 31.2
	ASL02	N	7.6 to 19.4
	ASL03 ²	N	-1 to 7.8
	ASL04	N	12 to 43.5
2-Oct-24	ASL01	N	6.4 to 12.2
	ASL02	N	9.5 to 13.7
	ASL03 ²	N	-0.3 to 8
	ASL04	N	11.1 to 25
3-Oct-24	ASL01	N	9.4 to 21.4
	ASL02	N	12.5 to 18.5
	ASL03	N	0.1 to 18.1
	ASL04	N	18.9 to 51.4
4-Oct-24	ASL01	N	11.7 to 44.8
	ASL02	N	18.4 to 62
	ASL03	N	5.9 to 73.9
	ASL04	N	35.7 to 63.4

Notes:

The EPA uses air monitors to track small particles in the air called PM¹⁰, which are less than 10 micrometers in size. These particles can include dust, dirt, smoke, or asbestos fibers. The air monitors measure the average amount of PM¹⁰ in the air over 15 minutes. If the amount of PM¹⁰ is above 150 µg/m³, the monitors alert the EPA and workers on-site. If this happens, all site activities will stop, results are reported to the EPA, and dust control measures are re-evaluated. It's important to note that high levels of PM¹⁰ do not necessarily mean there is asbestos in the air. The monitors only measure the amount of particles, not what they are made of.

Air monitoring results highlighted in YELLOW show that an air monitor measured PM¹⁰ above the EPA's action level.

¹Action level utilized on-site is currently 150 µg/m³ with PM₁₀, which is compared to the average air monitoring measurement over a 15-minute period. If the action level is exceeded for a 15-minute period, on-site safety procedures are to suspend site activities, report results to the EPA On-Scene Coordinator and re-evaluated dust suppression measures.

²ASL03 drifted negative. This run was stopped and the unit was zero calibrated. After zeroing the unit, returned to normal operation.

Air monitoring measurements (15-minute TWA concentrations) have been averaged over the total work day.

Air monitoring is not performed during inclement weather conditions/rain and thunderstorms.

Abbreviations:

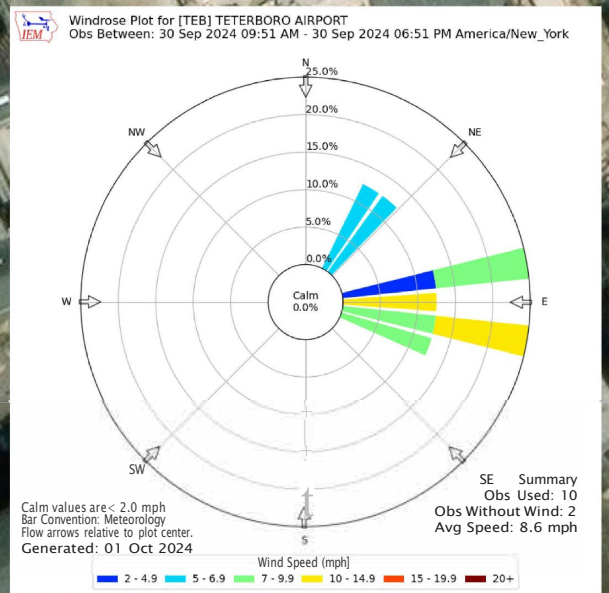
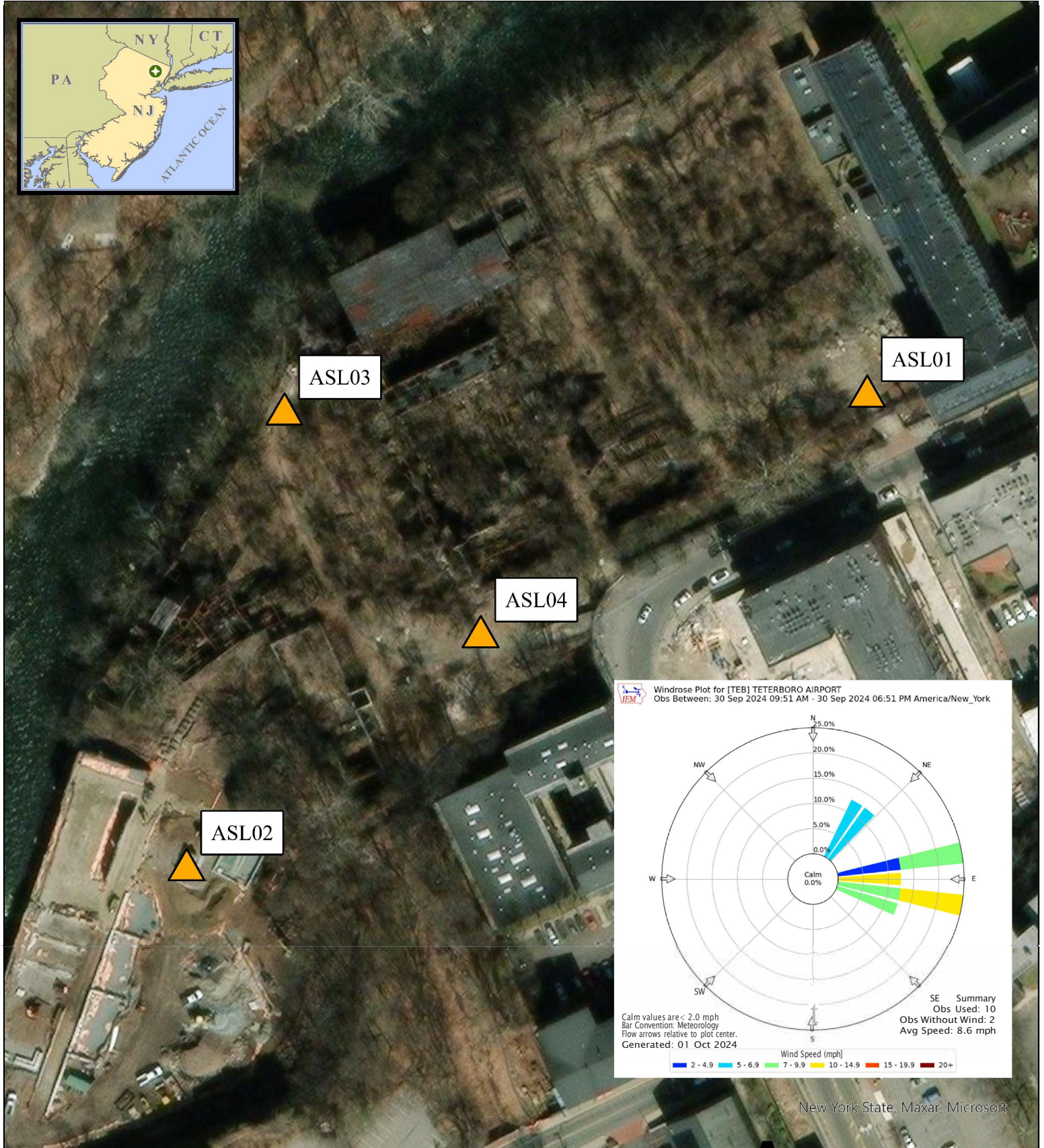
EPA - United State Environmental Protection Agency

µg/m³ - Micrograms per meter cubed

PM₁₀ - Particulate Matter, diameter 10 micrometers and smaller

TWA- Time weighted average

ASL -Air Station Location



New York State, Maxar, Microsoft

Legend



Air Monitoring Location

Notes:

- Air monitoring locations are approximate.
- ASL01 (North Gate; DustTrak II serial number [SIN]: 8530104213), ASL02 (Overlook Park Lower Fence Gate; DustTrak II SIN: 8530183802), ASL03 (North River Fence; DustTrak II SIN: 8530241807), and ASL04 (Exterior Colt Gun Building; DustTrak II SIN: 8530203306).
- Air stations consist of a DustTrak II with a particulate matter smaller than 10 microns in diameter (PM10) impactor and a Gi!Air Plus for air asbestos air sampling.

0 25 50 100 150 200 Feet

A

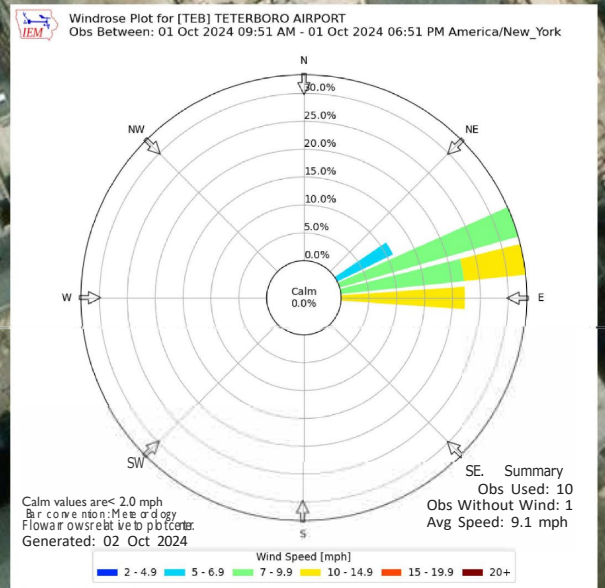
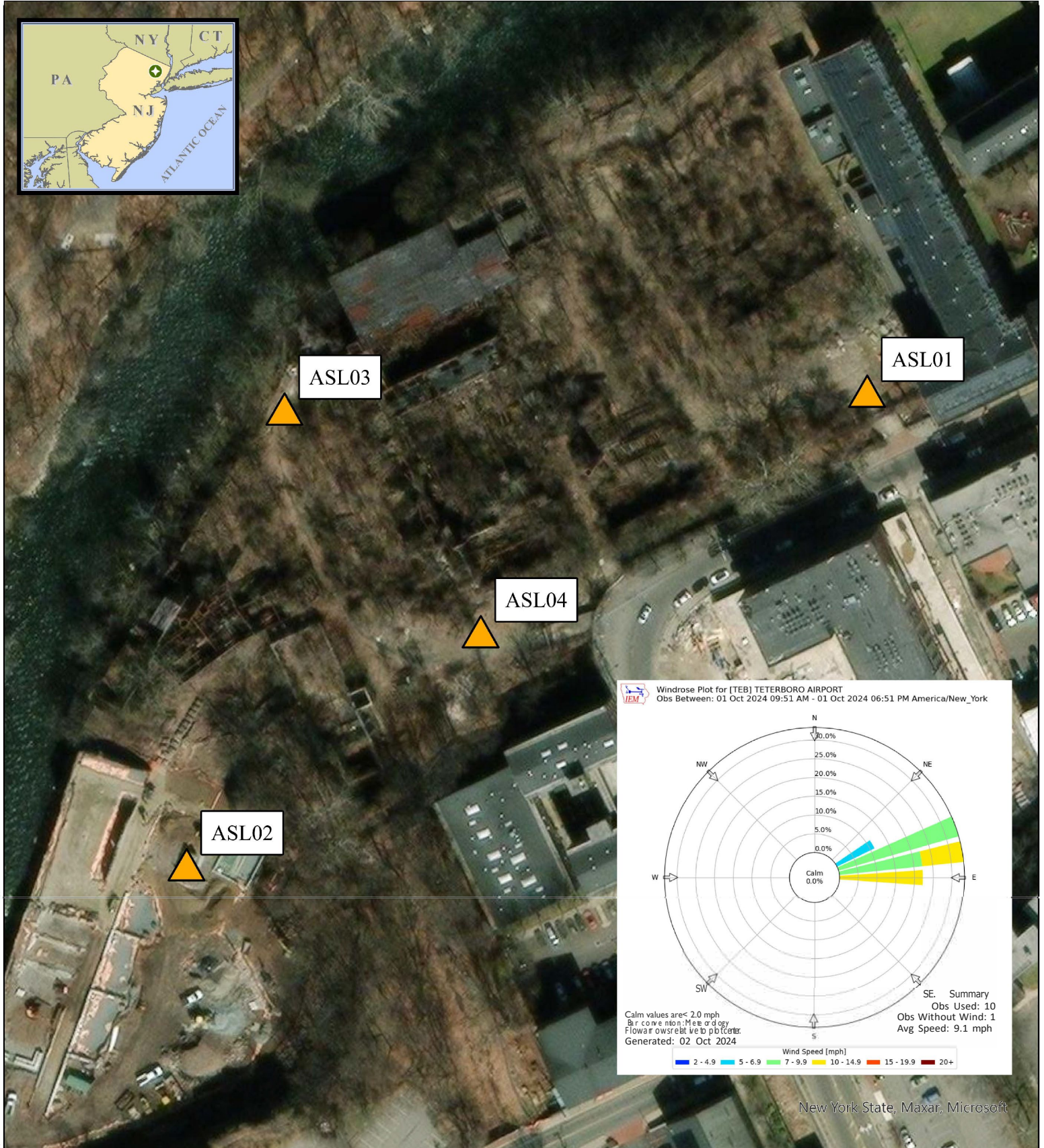
September 30, 2024 Air Monitoring Location Map

Allied Textile Printing
Paterson, New Jersey

U.S. ENVIRONMENTAL PROTECTION AGENCY
SUPERFUND TECHNICAL ASSESSMENT
& RESPONSE TEAM VI
CONTRACT# 68HE0325D0001

GISANALYST:
EPAOSC: M. Tabayo en g
START/VS/SPM:
CHARGE#:

WESTON SOLUTIONS Weston Solutions, Inc.
Federal East Division



New York State, Maxar, Microsoft

Legend



Air Monitoring Location

Notes:

1. Air monitoring locations are approximate.
2. ASL01 (North Gate; DustTrak II serial number [SIN]: 8530104213), ASL02 (Overlook Park Lower Fence Gate; DustTrak II SIN: 8530183802), ASL03 (North River Fence; DustTrak II SIN: 8530241807), and ASL04 (Exterior Colt Gun Building; DustTrak II SIN: 8530203306).
3. Air stations consist of a DustTrak II with a particulate matter smaller than 10 microns in diameter (PM10) impactor and a Gi!Air Plus for air asbestos air sampling.

0 25 50 100 150 200 feet

N
A

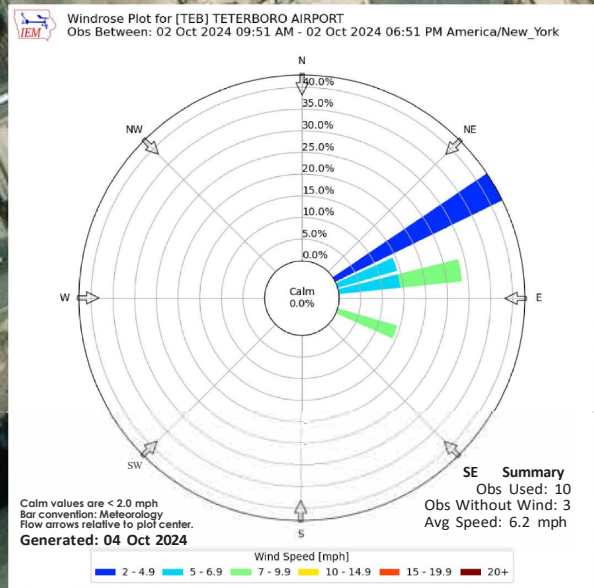
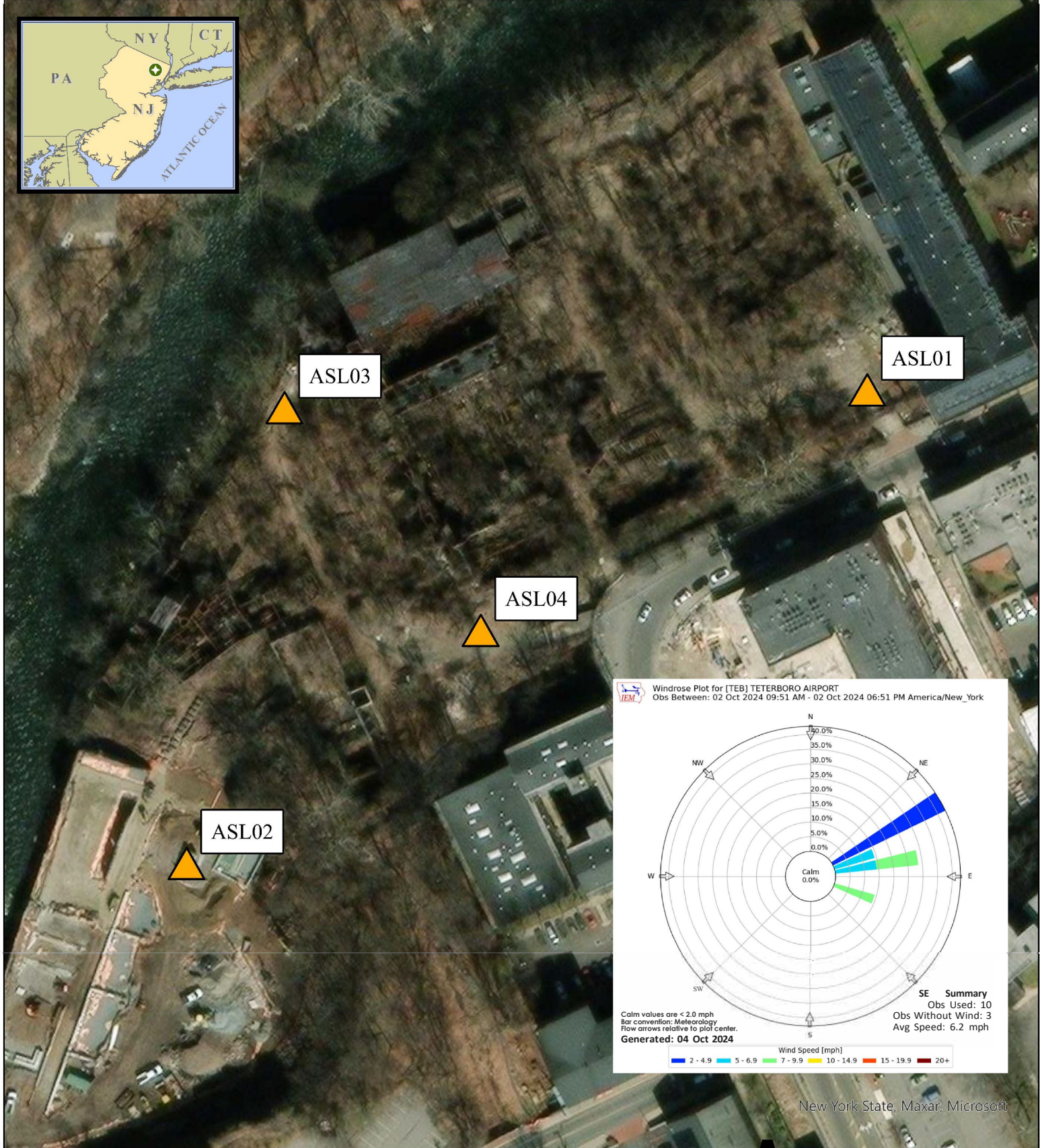
October 1, 2024 Air Monitoring Location Map

Allied Textile Printing
Paterson, New Jersey

U.S. ENVIRONMENTAL PROTECTION AGENCY
SUPERFUND TECHNICAL ASSESSMENT
& RESPONSE TEAM VI
CONTRACT# 68HE0325D0001

GISANALYST:
EPAOSC: M. Tabayo en g
START/VS/SPM:
CHARGE#:

WESTON SOLUTIONS Weston Solutions, Inc.
Federal East Division



New York State, Maxar, Microsoft

Legend



Air Monitoring Location

Notes:

1. Air monitoring locations are approximate.
2. ASL01 (North Gate; DustTrak II serial number [SIN]: 8530104213), ASL02 (Overlook Park Lower Fence Gate; DustTrak II SIN: 8530183802), ASL03 (North River Fence; DustTrak II SIN: 8530241807), and ASL04 (Exterior Colt Gun Building; DustTrak II SIN: 8530203306).
3. Air stations consist of a DustTrak II with a particulate matter smaller than 10 microns in diameter (PM10) impactor and a Gi!Air Plus for air asbestos air sampling.

0 25 50 100 150 200 Feet

A

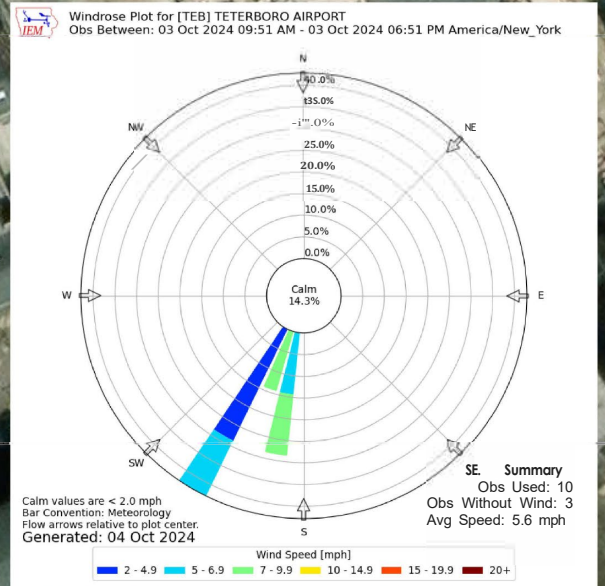
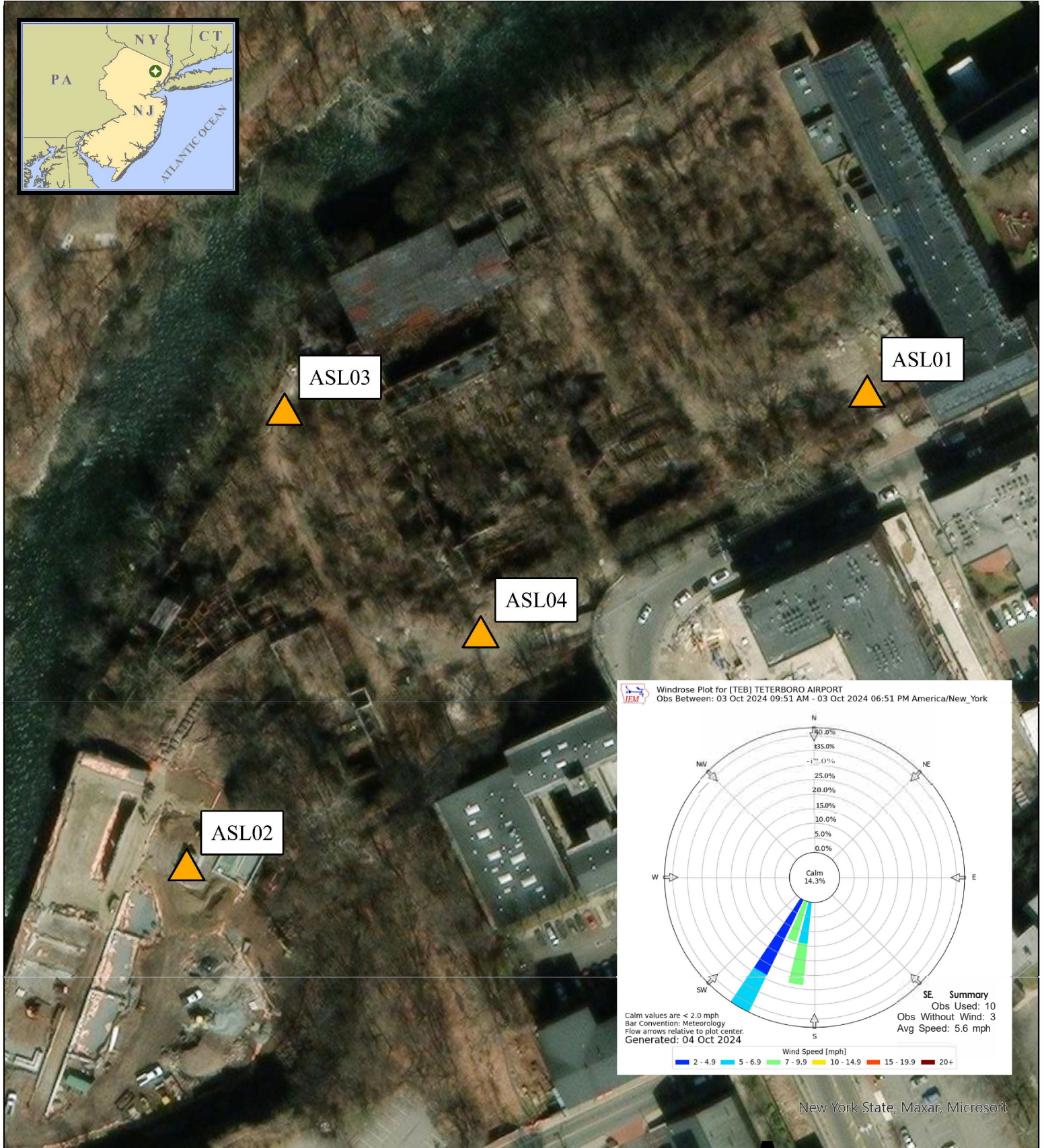
October 2, 2024 Air Monitoring Location Map

Allied Textile Printing
Paterson, New Jersey

U.S. ENVIRONMENTAL PROTECTION AGENCY
SUPERFUND TECHNICAL ASSESSMENT
& RESPONSE TEAM VI
CONTRACT# 68HE0325D0001

GISANALYST:
EPAOSC: M. Tabacong
START/SPM:
CHARGE#:

WESTON SOLUTIONS Weston Solutions, Inc.
Federal East Division



New York State, Maxar, Microsoft

Legend



Air Monitoring Location

Notes:

1. Air monitoring locations are approximate.
2. ASL01 (North Gate; DustTrak II serial number [SIN]: 8530104213), ASL02 (Overlook Park Lower Fence Gate; DustTrak II SIN: 8530183802), ASL03 (North River Fence; DustTrak II SIN: 8530241807), and ASL04 (Exterior Colt Gun Building; DustTrak II SIN: 8530203306).
3. Air stations consist of a DustTrak II with a particulate matter smaller than 10 microns in diameter (PM10) impactor and a Gi!Air Plus for air asbestos air sampling.

0 25 50 100 150 200 Feet

A

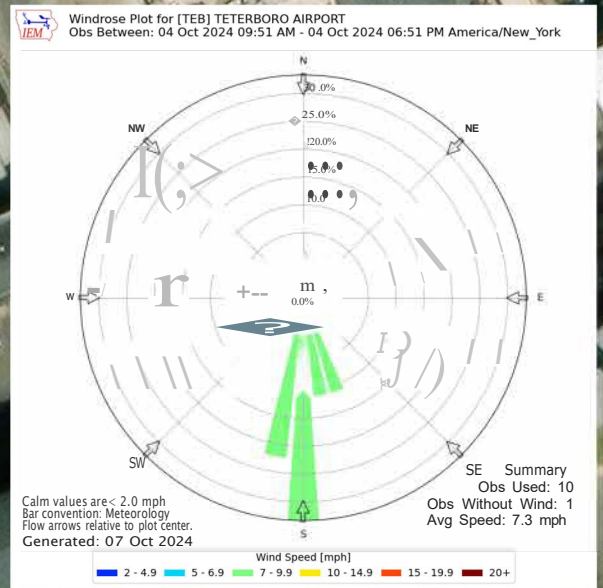
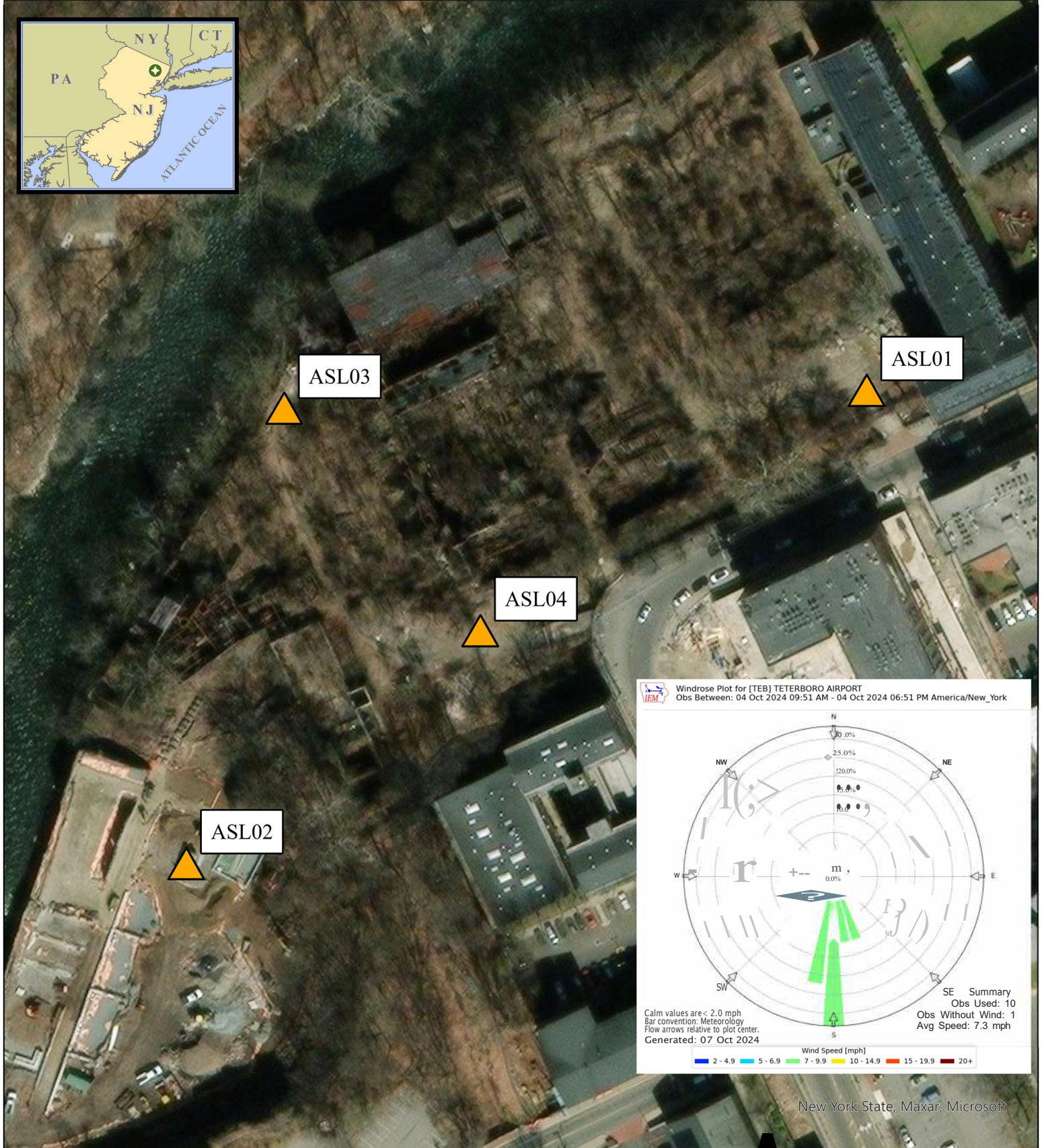
October 3, 2024 Air Monitoring Location Map

Allied Textile Printing
Paterson, New Jersey

U.S. ENVIRONMENTAL PROTECTION AGENCY
SUPERFUND TECHNICAL ASSESSMENT
& RESPONSE TEAM VI
CONTRACT# 68HE0325D0001

GISANALYST:
EPAOSC: M. Tabacong
START/SPM:
CHARGE#:

WESTON SOLUTIONS Weston Solutions, Inc.
Federal East Division



New York State, Maxar, Microsoft

Legend



Air Monitoring Location

Notes:

1. Air monitoring locations are approximate.
2. ASL01 (North Gate; DustTrak II serial number [SIN]: 8530104213), ASL02 (Overlook Park Lower Fence Gate; DustTrak II SIN: 8530183802), ASL03 (North River Fence; DustTrak II SIN: 8530241807), and ASL04 (Exterior Colt Gun Building; DustTrak II SIN: 8530203306).
3. Air stations consist of a DustTrak II with a particulate matter smaller than 10 microns in diameter (PM10) impactor and a Gi!Air Plus for air asbestos air sampling.

0 25 50 100 150 200 Feet

A

October 4, 2024 Air Monitoring Location Map

Allied Textile Printing
Paterson, New Jersey

U.S. ENVIRONMENTAL PROTECTION AGENCY
SUPERFUND TECHNICAL ASSESSMENT
& RESPONSE TEAM VI
CONTRACT# 68HE0325D0001

GISANALYST:
EPAOSC: M. Tabajoen g
START/VS/SPM:
CHARGE#:

WESTON SOLUTIONS Weston Solutions, Inc.
Federal East Division