

Table 1: Weekly Perimeter Air Monitoring Summary
Allied Textile Printing Site
Paterson, Passaic County, New Jersey
September 23 through 27, 2024

Date	Air Monitoring Instrument Number	Action Level Exceeded? ¹	Work Day 15-Minute TWA Concentration Range (µg/m ³)
23-Sep-24	ASL01	N	0.0056 to 0.0126
	ASL02	N	0.0059 to 0.0132
	ASL03	N	0.0056 to 0.0269
	ASL04	N	0.0083 to 0.0269
24-Sep-24	ASL01	N	0.0078 to 0.0185
	ASL02	N	0.0056 to 0.0081
	ASL03	N	0.0077 to 0.0120
	ASL04	N	0.0056 to 0.0194
25-Sep-24	ASL01	N	0.0093 to 0.0307
	ASL02	N	0.0101 to 0.0153
	ASL03	N	0.0026 to 0.0143
	ASL04	N	0.0165 to 0.0384
26-Sep-24	ASL01	N	0.0212 to 0.0477
	ASL02	N	0.0245 to 0.0484
	ASL03	N	0.0174 to 0.0449
	ASL04	N	0.0283 to 0.0582
27-Sep-24	ASL01	N	0.0068 to 0.0143
	ASL02	N	0.0078 to 0.0152
	ASL03	N	0.0021 to 0.0110
	ASL04	N	0.0091 to 0.0208

Notes:

The EPA uses air monitors to track small particles in the air called PM¹⁰, which are less than 10 micrometers in size. These particles can include dust, dirt, smoke, or asbestos fibers. The air monitors measure the average amount of PM¹⁰ in the air over 15 minutes. If the amount of PM¹⁰ is above 150 µg/m³, the monitors alert the EPA and workers on-site. If this happens, all site activities will stop, results are reported to the EPA, and dust control measures are re-evaluated. It's important to note that high levels of PM¹⁰ do not necessarily mean there is asbestos in the air. The monitors only measure the amount of particles, not what they are made of.

Air monitoring results highlighted in YELLOW show that an air monitor measured PM¹⁰ above the EPA's action level.

¹Action level utilized on-site is currently 150 µg/m³ with PM₁₀, which is compared to the average air monitoring measurement over a 15-minute period. If the action level is exceeded for a 15-minute period, on-site safety procedures are to suspend site activities, report results to the EPA On-Scene Coordinator and re-evaluated dust suppression measures.

Air monitoring measurements (15-minute TWA concentrations) have been averaged over the total work day.

Air monitoring is not performed during inclement weather conditions/rain and thunderstorms.

Abbreviations:

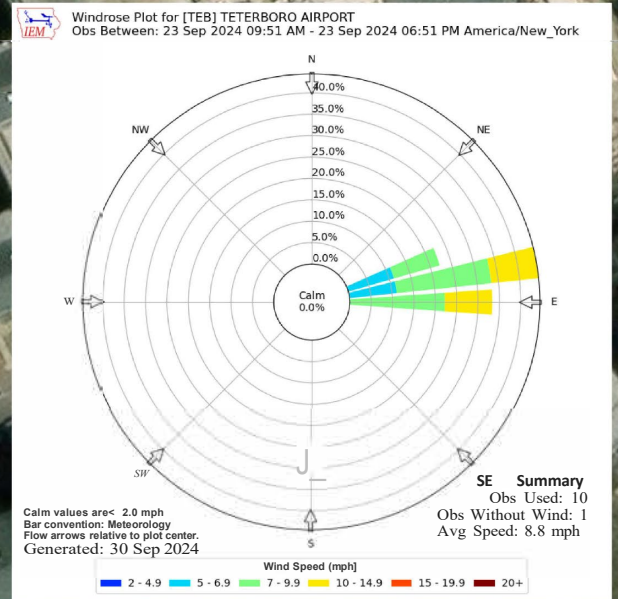
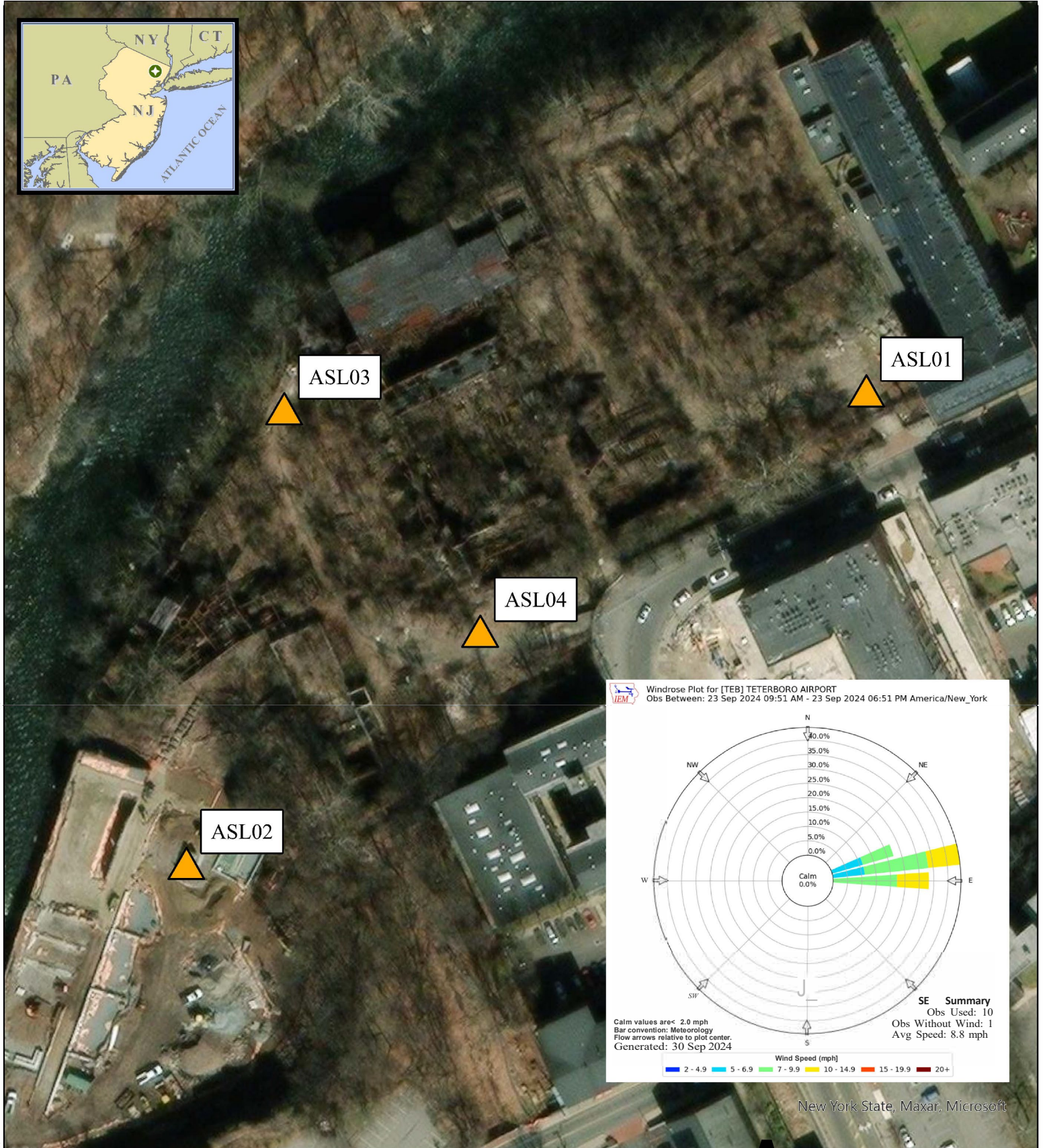
EPA - United State Environmental Protection Agency

µg/m³ - Micrograms per meter cubed

PM₁₀ - Particulate Matter, diameter 10 micrometers and smaller

TWA- Time weighted average

ASL -Air Station Location



New York State, Maxar, Microsoft

Legend



Air Monitoring Location

Notes:

1. Air monitoring locations are approximate.
2. ASL01 (North Gate; DustTrak II serial number [SIN]: 8530104213), ASL02 (Overlook Park Lower Fence Gate; DustTrak II SIN: 8530183802), ASL03 (North River Fence; DustTrak II SIN: 8530241807), and ASL04 (Exterior Colt Gun Building; DustTrak II SIN: 8530203306).
3. Air stations consist of a DustTrak II with a particulate matter smaller than 10 microns in diameter (PM10) impactor and a Gi!Air Plus for air asbestos air sampling.

0 25 50 100 150 200 Feet

A

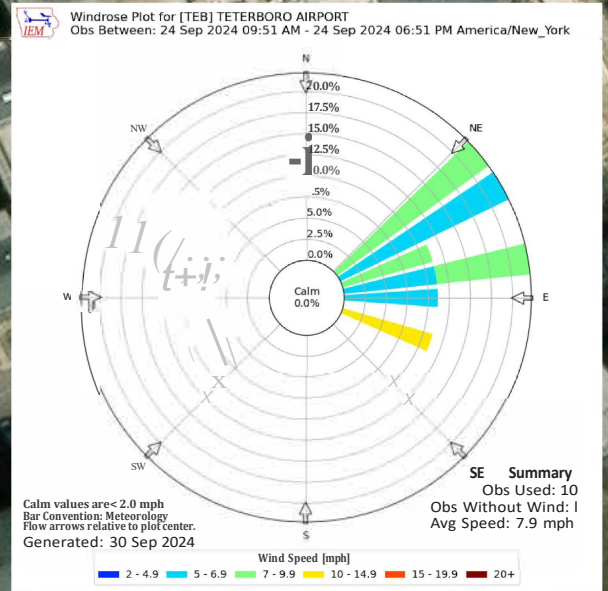
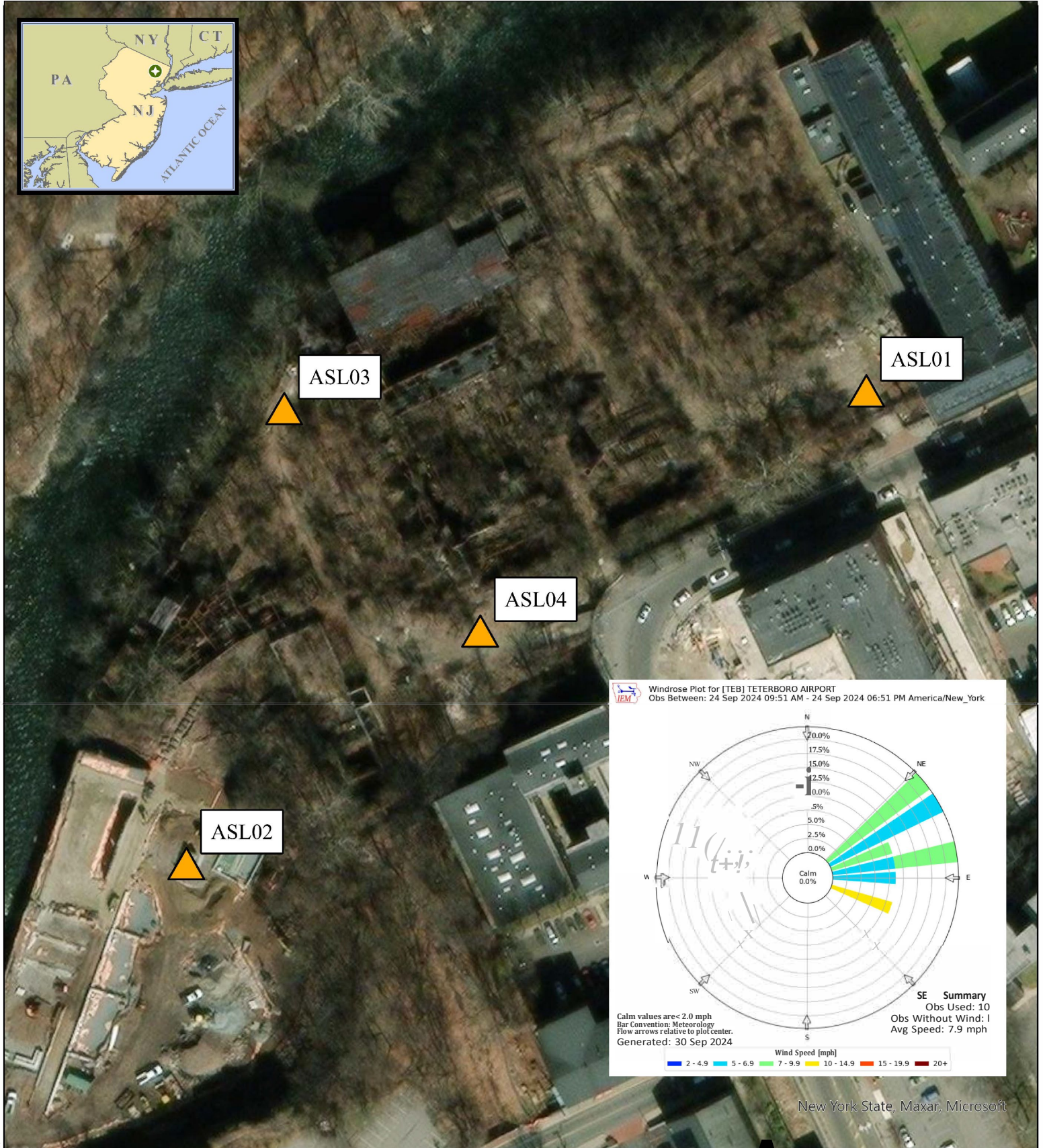
September 23, 2024 Air Monitoring Location Map

Allied Textile Printing
Paterson, New Jersey

U.S. ENVIRONMENTAL PROTECTION AGENCY
SUPERFUND TECHNICAL ASSESSMENT
& RESPONSE TEAM VI
CONTRACT# 68HE032SD001

GISANALYST:
EPAOSC: M. Tabacong
START/VS/SPM:
CHARGE#:

WESTON SOLUTIONS Weston Solutions, Inc.
Federal East Division



New York State, Maxar, Microsoft

Legend



Air Monitoring Location

Notes:

- Air monitoring locations are approximate.
- ASL01 (North Gate; DustTrak II serial number [SIN]: 8530104213),
ASL02 (Overlook Park Lower Fence Gate; DustTrak II SIN: 8530183802),
ASL03 (North River Fence; DustTrak II SIN: 8530241807),
and ASL04 (Exterior Colt Gun Building; DustTrak II SIN: 8530203306).
- Air stations consist of a DustTrak II with a particulate matter smaller than 10 microns in diameter (PM10) impactor and a Gi!Air Plus for air asbestos air sampling.

0 25 50 100 150 200 Feet

A

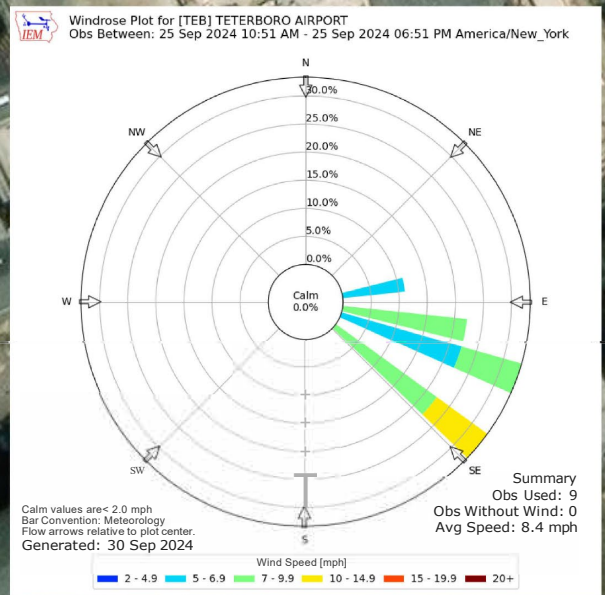
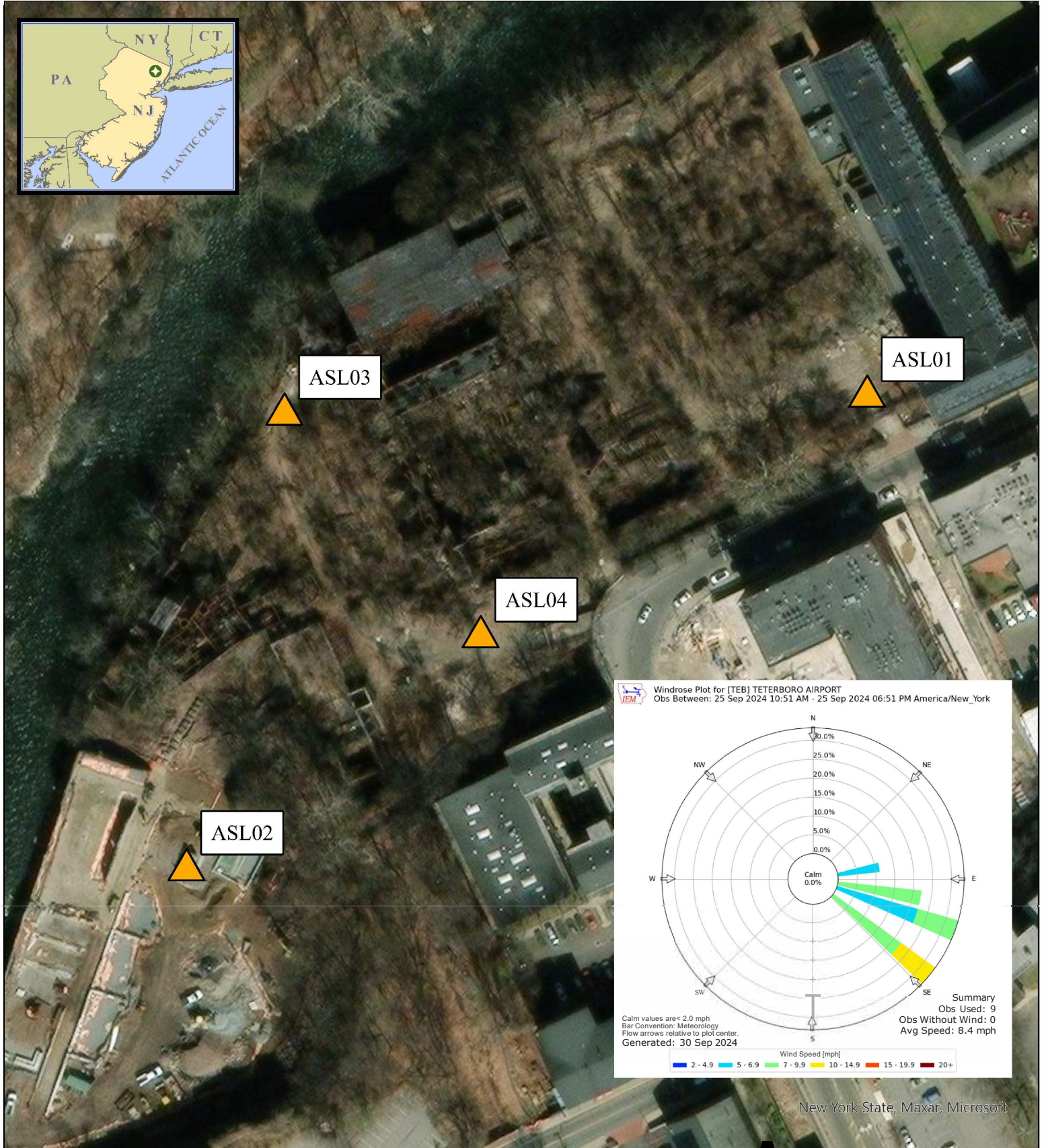
September 24, 2024 Air Monitoring Location Map

Allied Textile Printing
Paterson, New Jersey

U.S. ENVIRONMENTAL PROTECTION AGENCY
SUPERFUND TECHNICAL ASSESSMENT
& RESPONSE TEAM VI
CONTRACT# 68HE0325D001

GISANALYST:
EPAOSC: M. Tabacong
START/SPM:
CHARGE#:

WESTON SOLUTIONS Weston Solutions, Inc.
Federal East Division



New York State, Maxar, Microsoft

Legend



Air Monitoring Location

Notes:

1. Air monitoring locations are approximate.
2. ASL01 (North Gate; DustTrak II serial number [SIN]: 8530104213), ASL02 (Overlook Park Lower Fence Gate; DustTrak II SIN: 8530183802), ASL03 (North River Fence; DustTrak II SIN: 8530241807), and ASL04 (Exterior Colt Gun Building; DustTrak II SIN: 8530203306).
3. Air stations consist of a DustTrak II with a particulate matter smaller than 10 microns in diameter (PM10) impactor and a Gi!Air Plus for air asbestos air sampling.

0 25 50 100 150 200 Feet

A

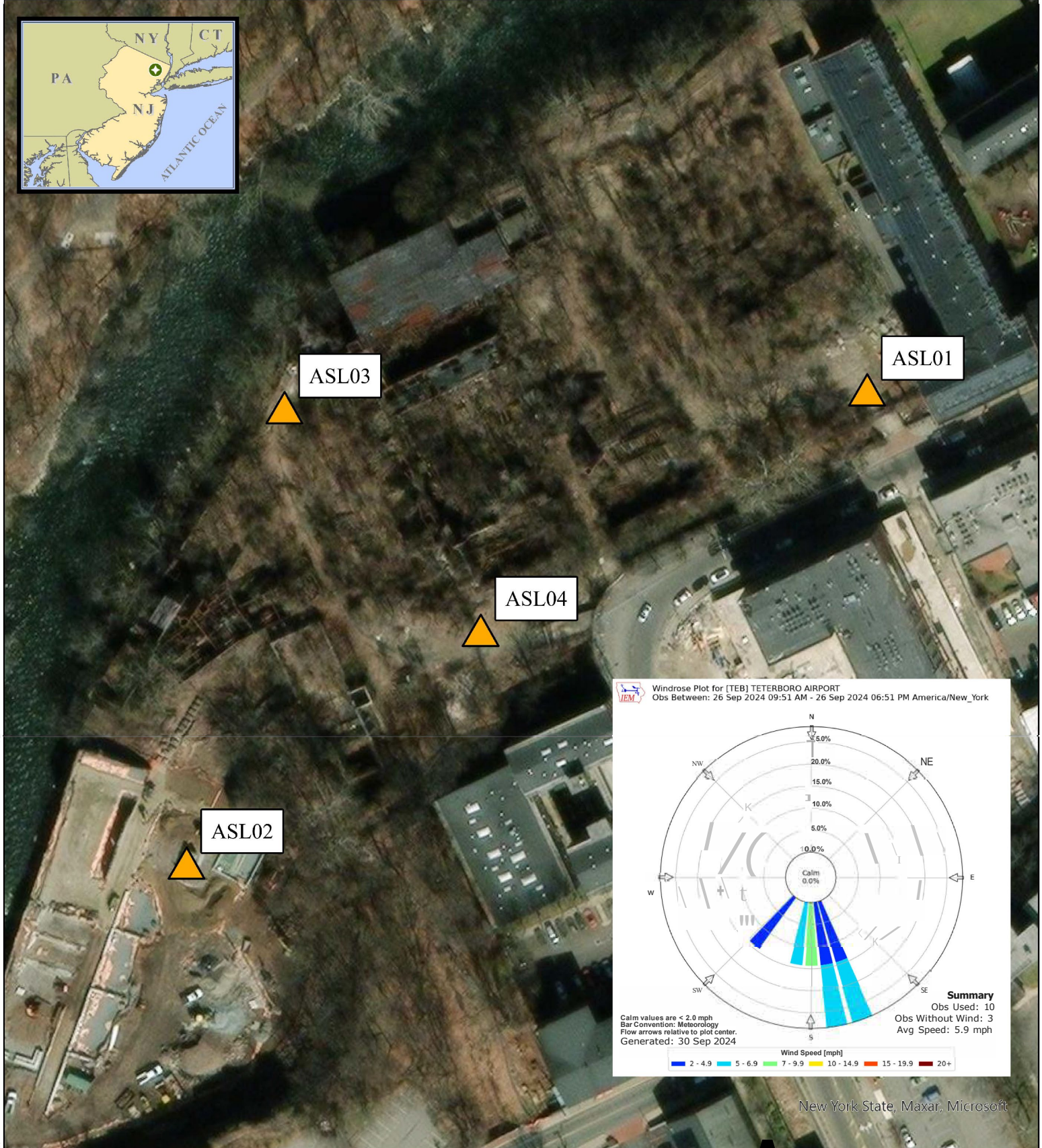
September 25, 2024 Air Monitoring Location Map

Allied Textile Printing
Paterson, New Jersey


U.S. ENVIRONMENTAL PROTECTION AGENCY
SUPERFUND TECHNICAL ASSESSMENT
& RESPONSE TEAM VI
CONTRACT# 68HE032SD001

GISANALYST:
EPAOSC: M. Tabayo en g
START/VS/SPM:
CHARGE#:

WESTON SOLUTIONS Weston Solutions, Inc.
Federal East Division



Legend

 Air Monitoring Location

Notes:

1. Air monitoring locations are approximate.
2. ASL01 (North Gate; DustTrak II serial number [SIN]: 8530104213), ASL02 (Overlook Park Lower Fence Gate; DustTrak II SIN: 8530183802), ASL03 (North River Fence; DustTrak II SIN: 8530241807), and ASL04 (Exterior Colt Gun Building; DustTrak II SIN: 8530203306).
3. Air stations consist of a DustTrak II with a particulate matter smaller than 10 microns in diameter (PM10) impactor and a Gi!Air Plus for air asbestos air sampling.

0 25 50 100 150 200 Feet

A

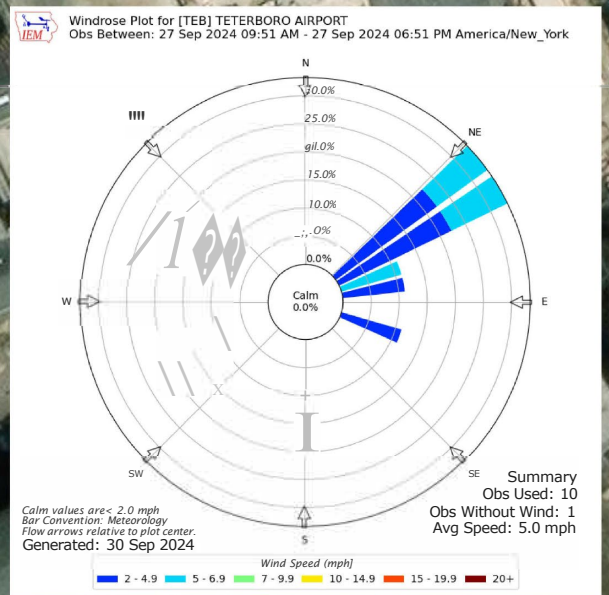
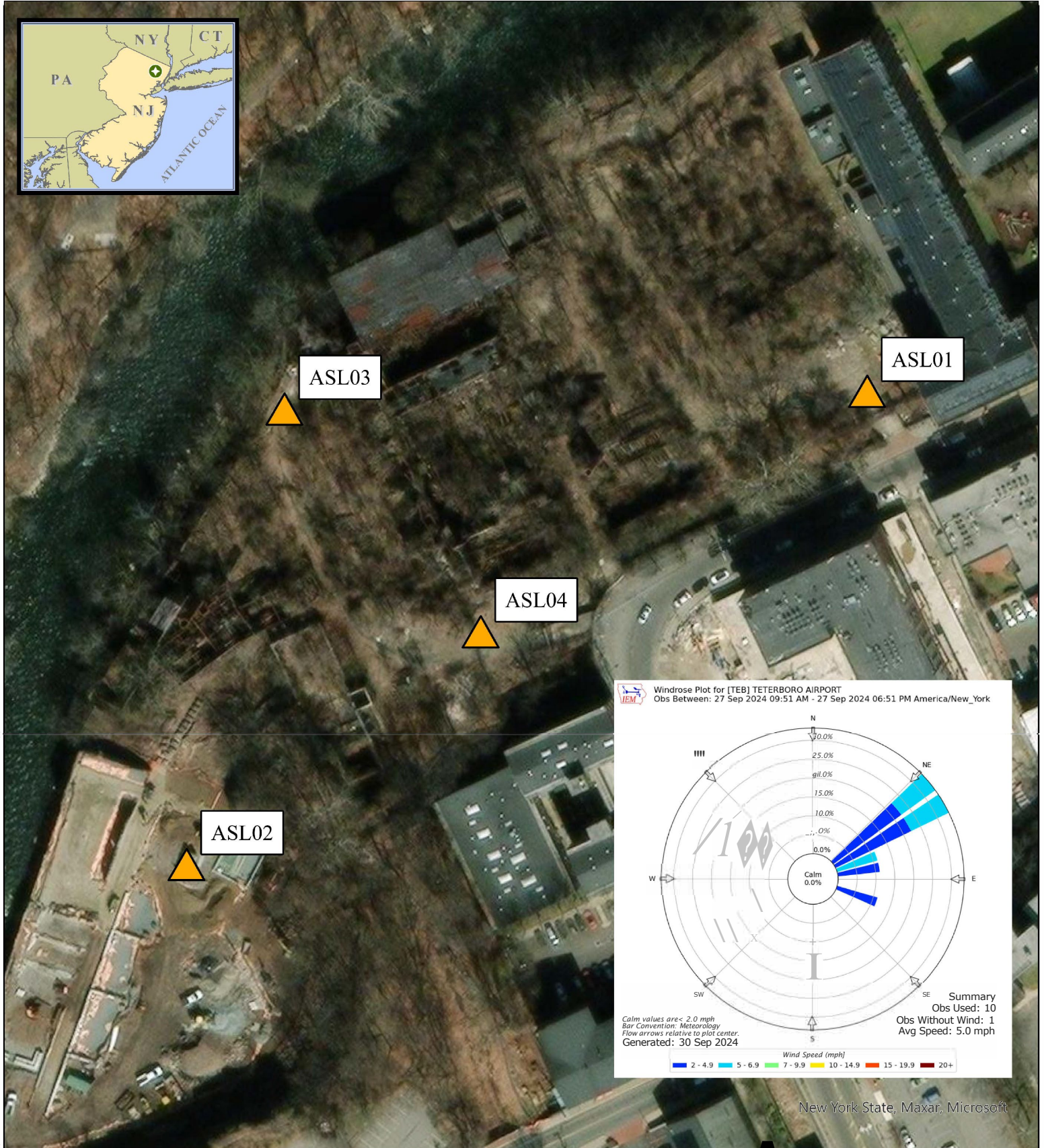
September 26, 2024 Air Monitoring Location Map

Allied Textile Printing
Paterson, New Jersey

U.S. ENVIRONMENTAL PROTECTION AGENCY
SUPERFUND TECHNICAL ASSESSMENT
& RESPONSE TEAM VI
CONTRACT# 68HE032SD001

GISANALYST:
EPAOSC: M. Tabayo, on g
START/SPM:
CHARGE#:

WESTON SOLUTIONS Weston Solutions, Inc.
Federal East Division



New York State, Maxar, Microsoft

Legend



Air Monitoring Location

Notes:

1. Air monitoring locations are approximate.
2. ASL01 (North Gate; DustTrak II serial number [SIN]: 8530104213), ASL02 (Overlook Park Lower Fence Gate; DustTrak II SIN: 8530183802), ASL03 (North River Fence; DustTrak II SIN: 8530241807), and ASL04 (Exterior Colt Gun Building; DustTrak II SIN: 8530203306).
3. Air stations consist of a DustTrak II with a particulate matter smaller than 10 microns in diameter (PM10) impactor and a Gi!Air Plus for air asbestos air sampling.

0 25 50 100 150 200 Feet

A

September 27, 2024 Air Monitoring Location Map

Allied Textile Printing
Paterson, New Jersey

U.S. ENVIRONMENTAL PROTECTION AGENCY
SUPERFUND TECHNICAL ASSESSMENT
& RESPONSE TEAM VI
CONTRACT# 68HE0325D001

GISANALYST:
EPAOSC: M. Tabayo en g
START/VS/SPM:
CHARGE#:

WESTON SOLUTIONS Weston Solutions, Inc.
Federal East Division