

Table 1: Weekly Perimeter Air Monitoring Summary
Allied Textile Printing Site
Paterson, Passaic County, New Jersey
January 6 through 9, 2025

Date	Air Monitoring Instrument Number	Action Level Exceeded? ¹	Work Day 15-Minute TWA Concentration Range (µg/m ³)
6-Jan-25	ASL01	N	11.9 to 29.9
	ASL02	N	7.1 to 26.51
	ASL03	N	0.14 to 1.7
	ASL04	N	4.8 to 117.5
7-Jan-25	ASL01	N	4.2 to 9.1
	ASL02	N	2.8 to 6.6
	ASL03	N	0.7 to 6.4
	ASL04	N	2.2 to 5.2
8-Jan-25	ASL01	N	1.9 to 4.1
	ASL02	N	4.2 to 93.7
	ASL03	N	0 to 11.8
	ASL04	N	0 to 13.0
9-Jan-25	ASL01	N	5.5 to 15.0
	ASL02	N	6.3 to 9.5
	ASL03	N	1.8 to 21.0
	ASL04	N	6.3 to 9.8

Notes:

The EPA uses air monitors to track small particles in the air called PM¹⁰, which are less than 10 micrometers in size. These particles can include dust, dirt, smoke, or asbestos fibers. The air monitors measure the average amount of PM¹⁰ in the air over 15 minutes. If the amount of PM¹⁰ is above 150 µg/m³, the monitors alert the EPA and workers on-site. If this happens, all site activities will stop, results are reported to the EPA, and dust control measures are re-evaluated. It's important to note that high levels of PM¹⁰ do not necessarily mean there is asbestos in the air. The monitors only measure the amount of particles, not what they are made of.

Air monitoring results highlighted in YELLOW show that an air monitor measured PM¹⁰ above the EPA's action level.

¹Action level utilized on-site is currently 150 µg/m³ with PM₁₀, which is compared to the average air monitoring. Air monitoring is not performed during inclement weather conditions/rain and thunderstorms.

No intrusive work or activities that involved movement of existing on-Site materials was performed on January 10, 2025, therefore air monitoring was not conducted.

Abbreviations:

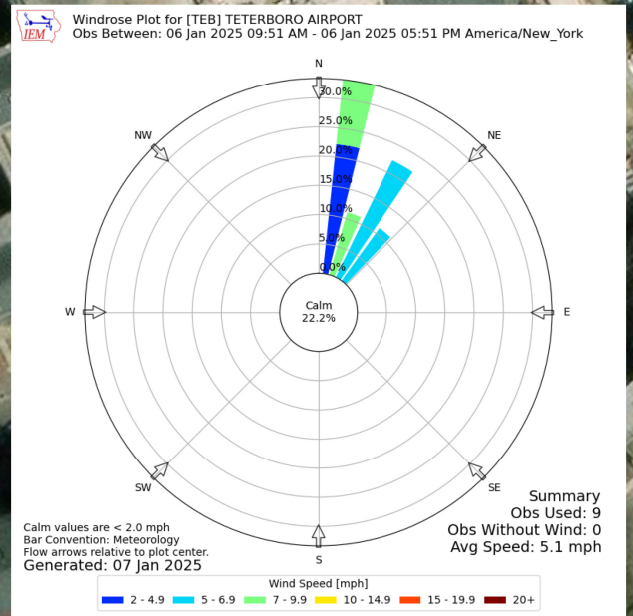
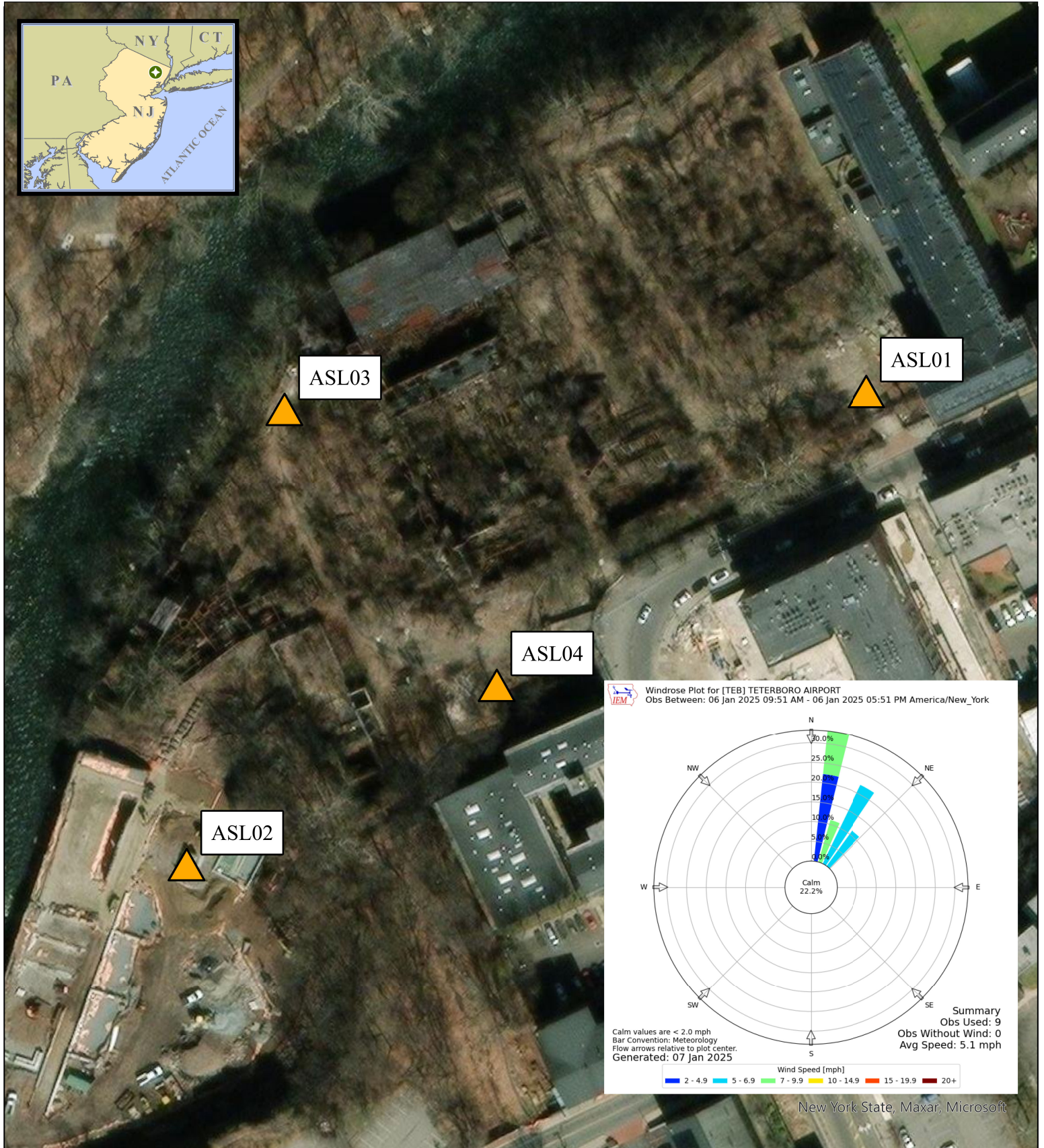
EPA - United State Environmental Protection Agency

µg/m³ - Micrograms per meter cubed

PM₁₀ - Particulate Matter, diameter 10 micrometers and smaller

TWA- Time weighted average

ASL -Air Station Location



New York State, Maxar, Microsoft

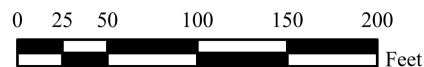
Legend



Air Monitoring Location

Notes:

1. Air monitoring locations are approximate.
2. ASL01 (North Gate),
ASL02 (Overlook Park Lower Fence Gate),
ASL03 (North River Fence),
and ASL04 (Exterior Colt Gun Building).
3. Air stations consist of a DustTrak II with a particulate matter smaller than 10 microns in diameter (PM10) impactor and a GilAir Plus for air asbestos air sampling.



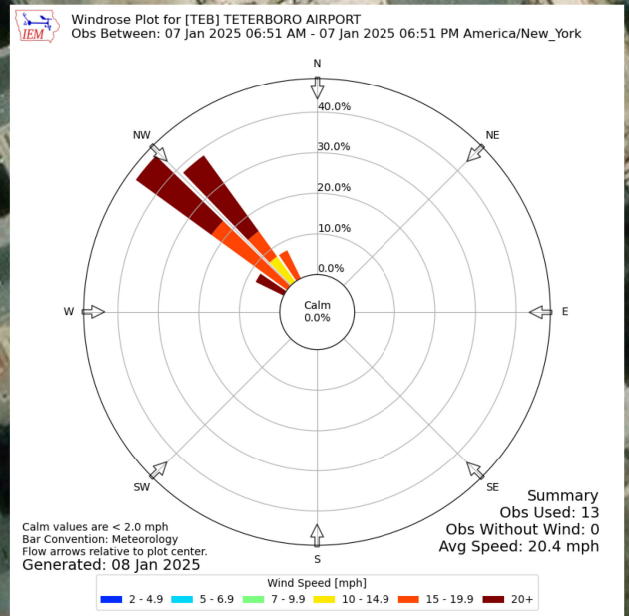
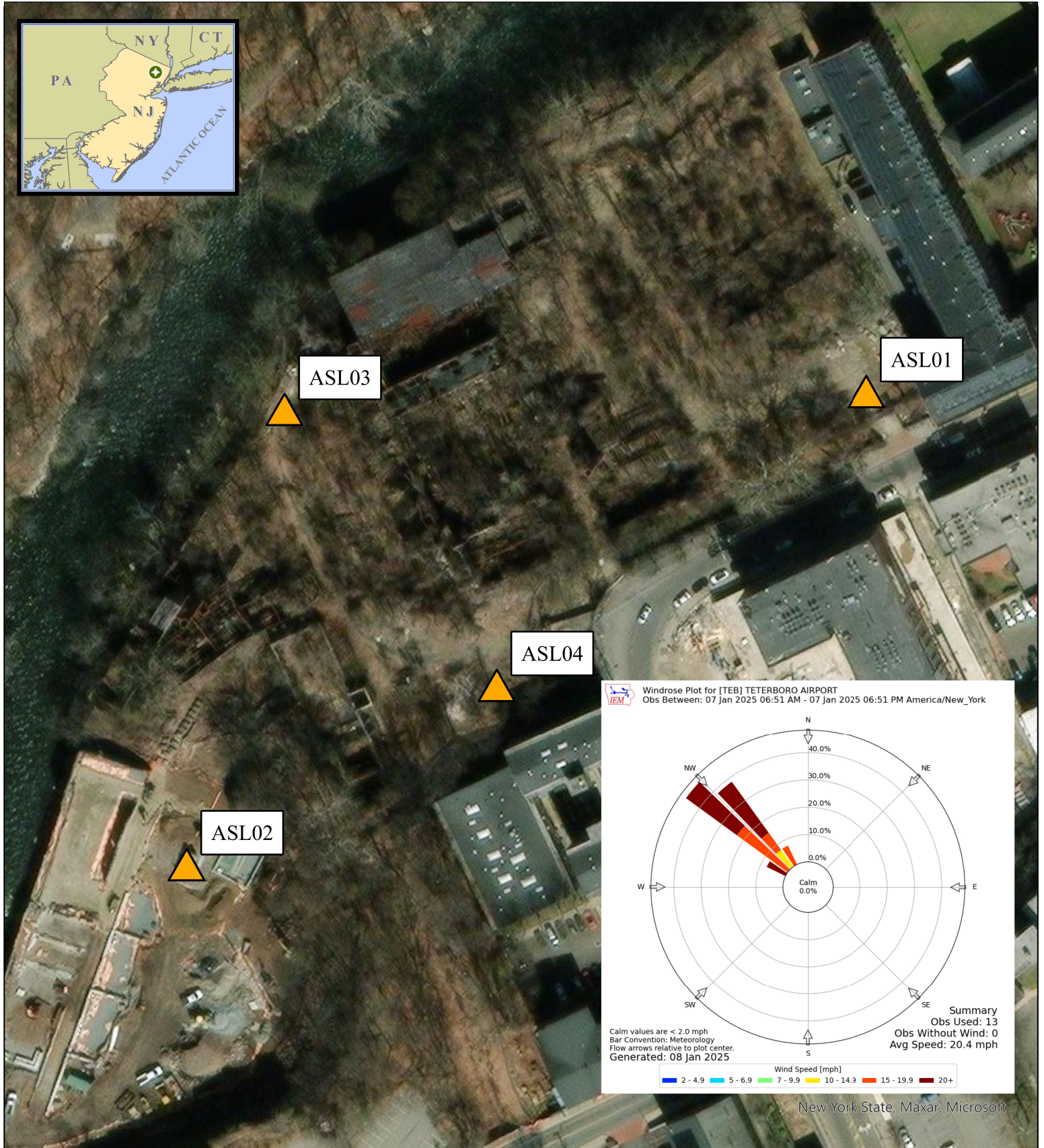
January 6, 2025 Air Monitoring Location Map

Allied Textile Printing
Paterson, New Jersey

U.S. ENVIRONMENTAL PROTECTION AGENCY
SUPERFUND TECHNICAL ASSESSMENT
& RESPONSE TEAM VI
CONTRACT # 68HE0325D0001

GIS ANALYST:
EPA OSC: C. Grell
START VI SPM:
CHARGE #:

WESTON SOLUTIONS Weston Solutions, Inc.
Federal East Division



New York State, Maxar, Microsoft

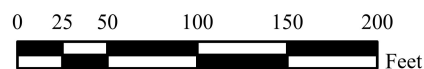
Legend



Air Monitoring Location

Notes:

1. Air monitoring locations are approximate.
2. ASL01 (North Gate),
ASL02 (Overlook Park Lower Fence Gate),
ASL03 (North River Fence),
and ASL04 (Exterior Colt Gun Building).
3. Air stations consist of a DustTrak II with a particulate matter smaller than 10 microns in diameter (PM10) impactor and a GilAir Plus for air asbestos air sampling.



January 7, 2025 Air Monitoring Location Map

Allied Textile Printing
Paterson, New Jersey

U.S. ENVIRONMENTAL PROTECTION AGENCY
SUPERFUND TECHNICAL ASSESSMENT
& RESPONSE TEAM VI
CONTRACT # 68HE0325D0001

GIS ANALYST:

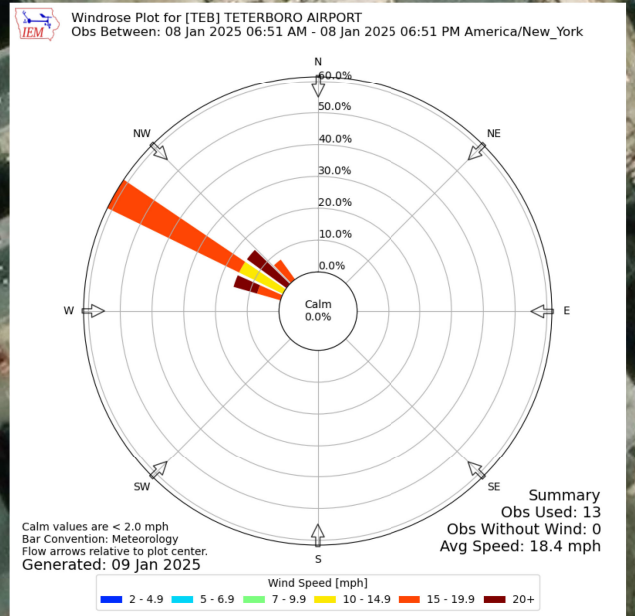
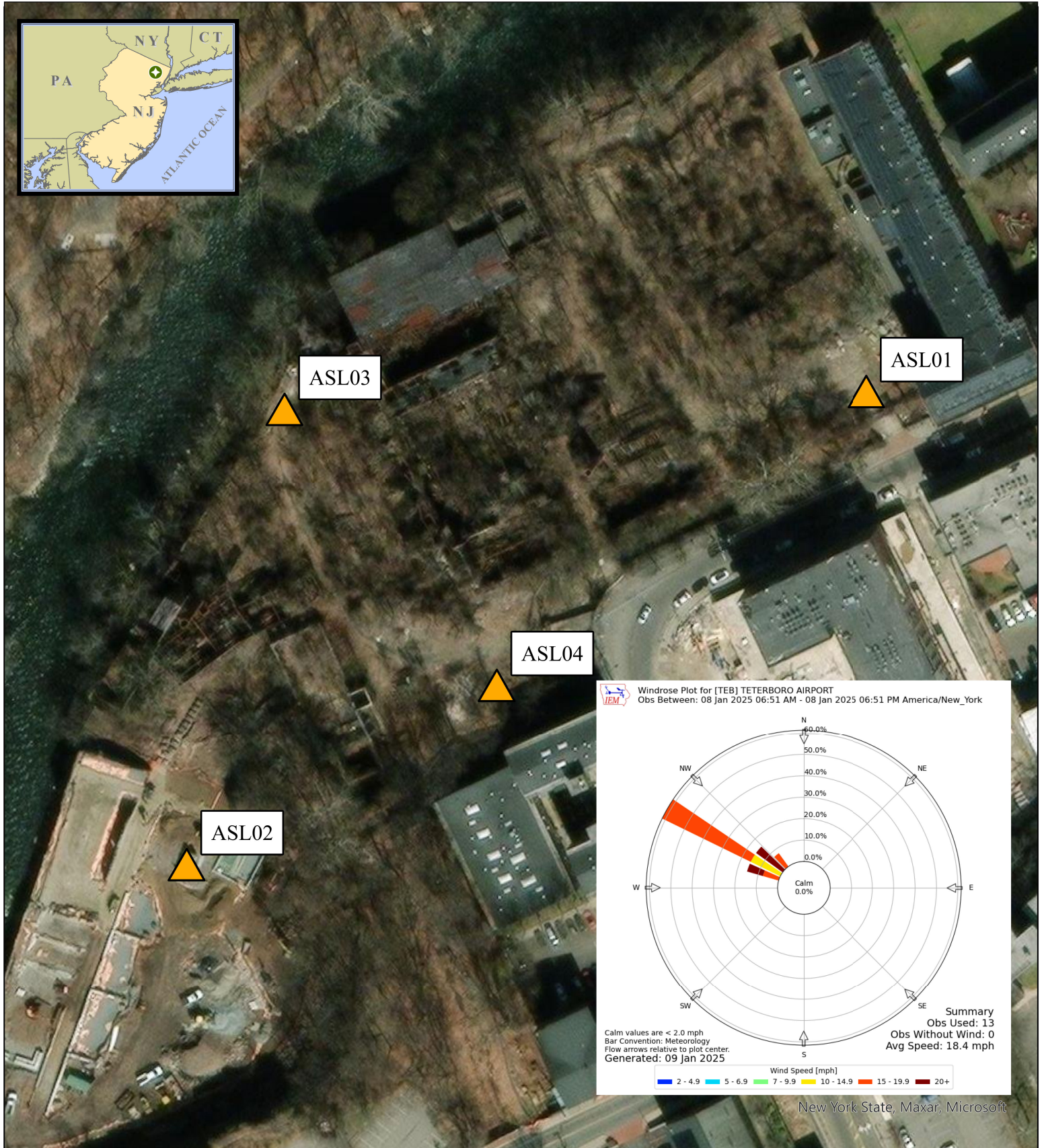
EPA OSC: C. Grell

START VI SPM:

CHARGE #:



Weston Solutions, Inc.
Federal East Division



New York State, Maxar, Microsoft

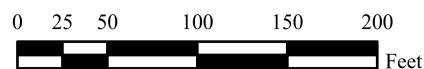
Legend



Air Monitoring Location

Notes:

1. Air monitoring locations are approximate.
2. ASL01 (North Gate),
ASL02 (Overlook Park Lower Fence Gate),
ASL03 (North River Fence),
and ASL04 (Exterior Colt Gun Building).
3. Air stations consist of a DustTrak II with a particulate matter smaller than 10 microns in diameter (PM10) impactor and a GilAir Plus for air asbestos air sampling.



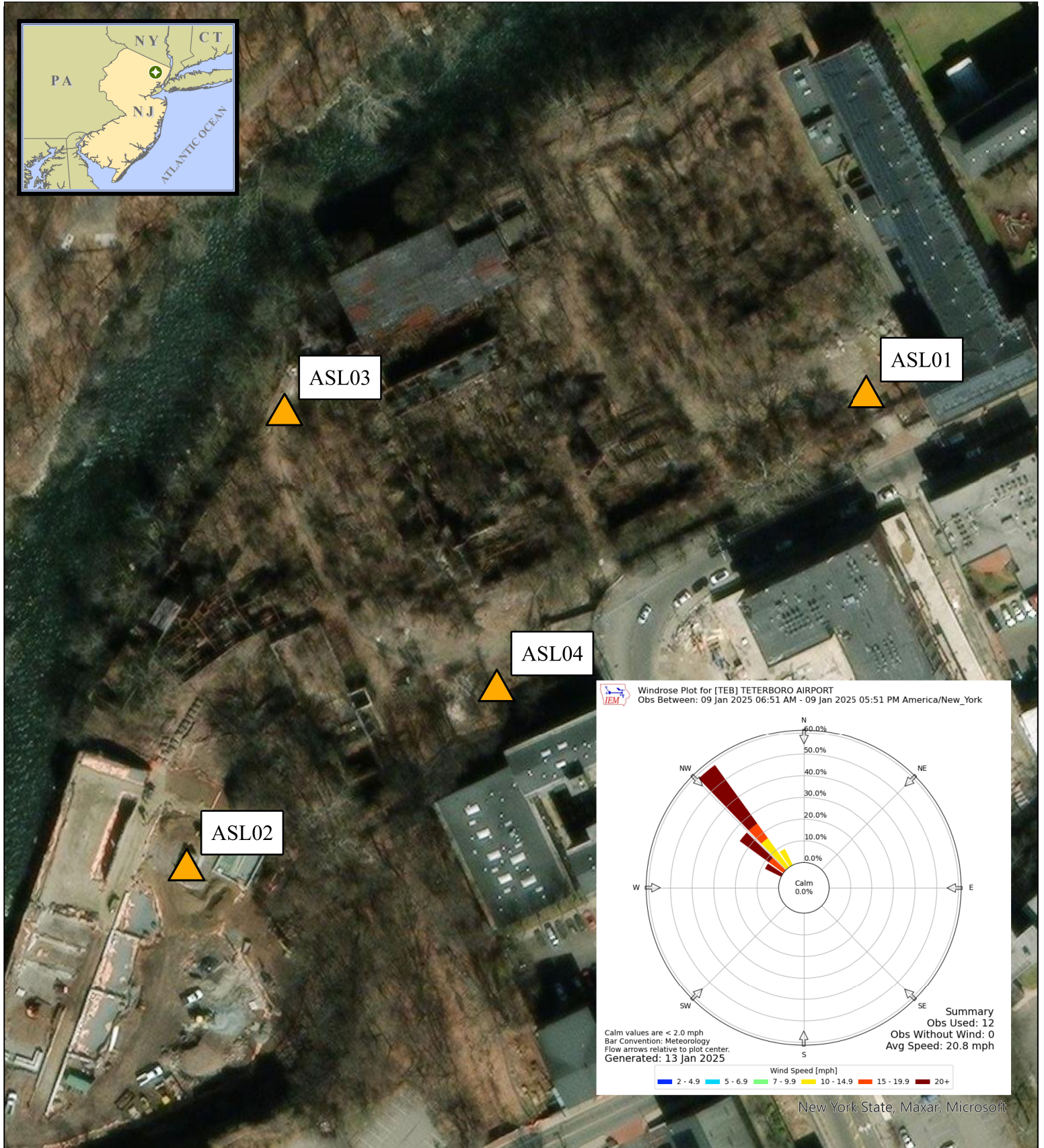
January 8, 2025 Air Monitoring Location Map

Allied Textile Printing
Paterson, New Jersey

U.S. ENVIRONMENTAL PROTECTION AGENCY
SUPERFUND TECHNICAL ASSESSMENT
& RESPONSE TEAM VI
CONTRACT # 68HE0325D0001

GIS ANALYST:
EPA OSC: C. Grell
START V SPM:
CHARGE #:

WESTON SOLUTIONS Weston Solutions, Inc.
Federal East Division

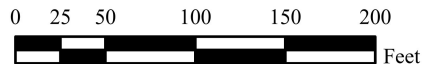


Legend

 Air Monitoring Location

Notes:

1. Air monitoring locations are approximate.
2. ASL01 (North Gate),
ASL02 (Overlook Park Lower Fence Gate),
ASL03 (North River Fence),
and ASL04 (Exterior Colt Gun Building).
3. Air stations consist of a DustTrak II with a particulate matter smaller than 10 microns in diameter (PM10) impactor and a GilAir Plus for air asbestos air sampling.



January 9, 2025 Air Monitoring Location Map

Allied Textile Printing
Paterson, New Jersey

U.S. ENVIRONMENTAL PROTECTION AGENCY
SUPERFUND TECHNICAL ASSESSMENT
& RESPONSE TEAM VI
CONTRACT # 68HE0325D0001

GIS ANALYST:
EPA OSC: C. Grell
START V SPM:
CHARGE #:

WESTON SOLUTIONS Weston Solutions, Inc.
Federal East Division