

## Operational Period # 22

- Demolition activities continued in the retort areas in advance of the abatement work. This effort is to remove non ACM pipes, catwalks, and other impediments.
- Encon Evaporator arrived on site. Setup will take a week and will require working with the City of Eugene and NW Naturals.
- Scaffolding setup began and is expected to be completed toward the end of the next operations period
- Hazardous Classification (HAZCLASS) DU08 and other areas throughout the Site: 698 containers were inventoried, of which 253 were sampled. During the HAZCLASS operations, a number of mercury containing devices were discovered as well as a drawer that was contaminated with mercury. All the collected mercury containers and identified contamination has been consolidated and secured.
- Demolition operations continued in DU03 -
  - T-02 removed
  - Solidified sludge in T-07, preparing for removal
  - Built ramp for access to T-03 and T-04
- Approximately 7,500 gallons of sludge were removed from T-07, T-42, and T-43.
- Approximately 600 tons of processed (solidified) sludge are stored onsite.

### **Unmanned Aerial Systems (UAS) Activities:**

UAV operations were conducted during this Ops Period - A compiled mosaic consisting of three flights focusing on DU03 and the retort area was collected and used to update the Tank Status Map

### **Monitoring, Sampling, and Analysis**

- Deploy air monitoring on the site perimeter and in work areas during active operations. This included monitoring at AM03 near the site entrance and AM10 for work zone monitoring in DU03.
- No results are provided for one of the DustTrak particulate air monitoring instruments (AM03) due to data log errors on 1/22 and 1/23.
- Water results from 2 separate Frac tanks that are storing process water collected from DU03 and DU02 are below. This water will be evaporated in the Encon evaporator:

Analyte	CAS. NO	Sample ID	JHBSW03	JHBSW04
		Date	1/16/2025	1/16/2025
		Type	Field Sample	Field Sample
		Units	Result	Result
Arsenic	7440-38-2	ug/L	1800	1200
Chromium	7440-47-3	ug/L	3.6	3.1
Copper	7440-50-8	ug/L	1400	620
Lead	7439-92-1	ug/L	5.6	3.1
Zinc	7440-66-6	ug/L	1400	980

Key:

CAS. NO = Chemical abstracts service number

ug/L = Micrograms per liter

EPA will compare these results against samples collected in November evaluate any changes in the metal concentrations

### [Tank and air monitoring status viewer](#)

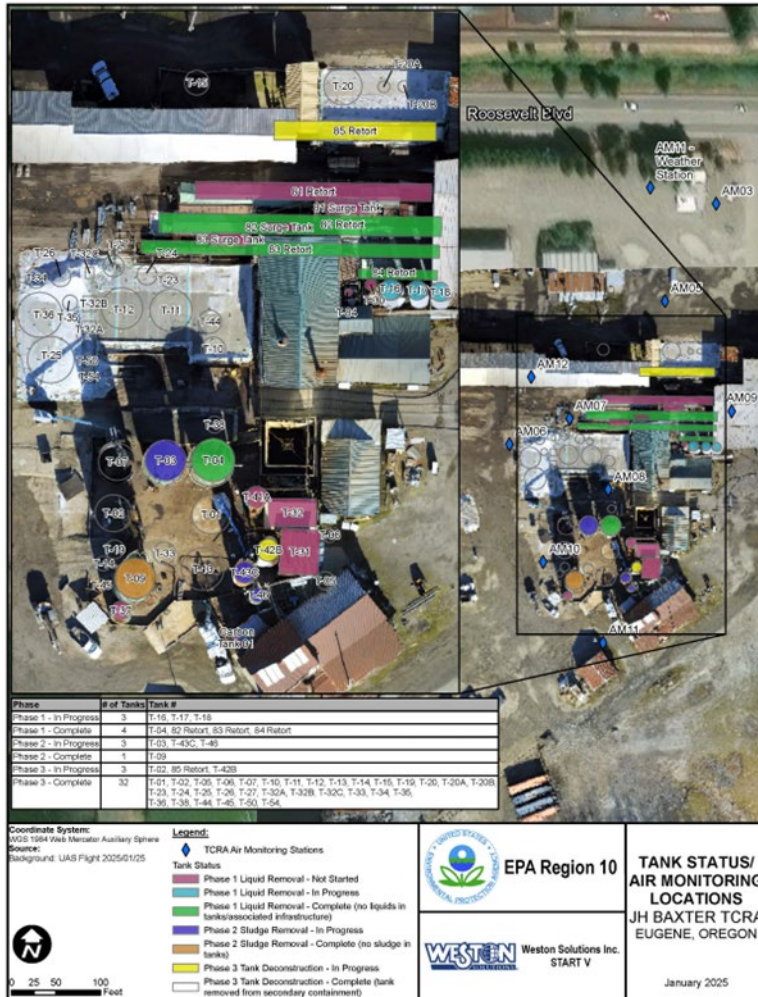
Particulate Air Monitoring Data (DusTrak) January 20-25, 2025							
Date	Air Monitoring Station	Total Run Time	Min (mg/m <sup>3</sup> )	Max (mg/m <sup>3</sup> )	Average (mg/m <sup>3</sup> )	Max TWA	Percent of Readings Exceeding 0.07 mg/m <sup>3</sup>
1/20/2025	AM03	9:14	0	0.154	0.028	0.065	13.1%
	AM10	8:52	0	0.11	0.026	0.039	11.1%
1/21/2025	AM03	9:11	0	0.075	0.022	0.024	0.0%
	AM10	8:56	0	0.712	0.028	0.030	1.6%
1/22/2025	AM10	8:49	0.018	0.365	0.037	0.038	9.5%
1/23/2025	AM10	9:21	0.02	0.192	0.049	0.052	18.9%
1/24/2025	AM03	9:08	0.017	0.106	0.032	0.034	0.0%
	AM10	9:20	0.011	0.151	0.048	0.080	26.8%
1/25/2025	AM03	9:35	0.017	0.154	0.043	0.047	16.5%
	AM10	8:19	0	0.045	0.009	0.009	0.0%
Notes: AM03 Data log errors occurred 1/22 and 1/23							

VOC Air Monitoring Data (AreaRAE) January 20-25, 2025						
Date	Air Monitoring Station	Total Run Time	VOC Min (ppb)	VOC Max (ppb)	VOC Average (ppb)	Percent of Readings Exceeding 5 ppm
1/20/2025	AM03	8:29	15	51	40	0%
	AM10	8:29	19	267	89	0%
1/21/2025	AM03	9:19	26	46	35	0%
	AM10	9:19	0	240	57	0%
1/22/2025	AM03	8:45	22	54	43	0%
	AM10	8:45	0	469	63	0%
1/24/2025	AM03	9:24	19	83	57	0%
	AM10	9:24	0	226	105	0%
1/25/2025	AM03	8:03	32	98	43	0%
	AM10	8:03	0	775	13	0%
Notes: Data log error on 1/23/2025						

NH3 Air Monitoring Data (AreaRAE) January 20-25, 2025						
Date	Air Monitoring Station	Total Run Time	NH <sub>3</sub> Min (ppm)	NH <sub>3</sub> Max (ppm)	NH <sub>3</sub> Average (ppm)	Percent of Readings Exceeding 25 ppm
1/20/2025	AM03	8:29	0	1	0.04	0%
	AM10	8:29	0	0	0.00	0%
1/21/2025	AM03	9:19	0	0	0.00	0%
	AM10	9:19	0	0	0.00	0%
1/22/2025	AM03	8:45	0	0	0.00	0%
	AM10	8:45	0	0	0.00	0%
1/24/2025	AM03	9:24	0	0	0.00	0%
	AM10	9:24	0	0	0.00	0%
1/25/2025	AM03	8:03	0	0	0.00	0%
	AM10	8:03	0	0	0.00	0%
Notes: Data log error on 1/23/2025						

## 2.1.3 Progress Metrics

Tank Status Map:



### Water Storage and Evaporation:

Week of	Run Time	Volume Evaporated	Remaining Liquid	Available Storage Capacity
01/25/2025	N/A	N/A	234,000 gal	60,000 gal
Running Total	N/A	N/A	N/A	N/A

#### Key:

N/A= Not Applicable. No water has been processed at this time.  
gal = Gallons

### Disposal:

- ACM Rolloff boxes: N/A
- RCRA Rolloff boxes: N/A
- Non RCRA Rolloff boxes:
  - 2 boxes of unprepared scrap steel
  - 2 boxes of Stainless Steel