

#### Operational Period # 29

- Continued Phase 4 - Completed secondary containment deconstruction activities within DU03 and began activities in DU01 and DU02. These activities consist of removing small sections, evaluating the area for any daylighting material, and conduct a preliminary evaluation of the soils using an X-ray fluorescence (XRF). Based on those results, a composite soil sample may be collected to advance future remedial activities.
- Completed the removal efforts of T-16, T-17, and T-18 and the infrastructure around those tanks.
- Continued to collect, manage, and evaporate process water (see process metrics below).

#### **Unmanned Aerial Systems (UAS) Activities:**

USCG conducted routine flights throughout the week

#### **Monitoring, Sampling, and Analysis**

Air Monitoring: AM03, AM05, AM06, AM11, AM15, AM16

Sampling:

Collected two PAH, two PCP, and two Metals air samples down wind of the secondary containment demolition of the South Tank Farm on Monday (3/10/2025) and Tuesday (3/11/2025).

Collected one PAH/Dioxin air sample from the top of the emissions stack on Wednesday (3/12/2025).

XRF:

Collected XRF readings from underneath the secondary containment, as it was removed from the South and North Tank Farm. High concentrations of Arsenic (>2,700ppm) were detected on the east side of the North Tank Farm. Several soil samples were collected from underneath the tank farm to be dried out and analyzed with the XRF.

[Tank and air monitoring status viewer](#)

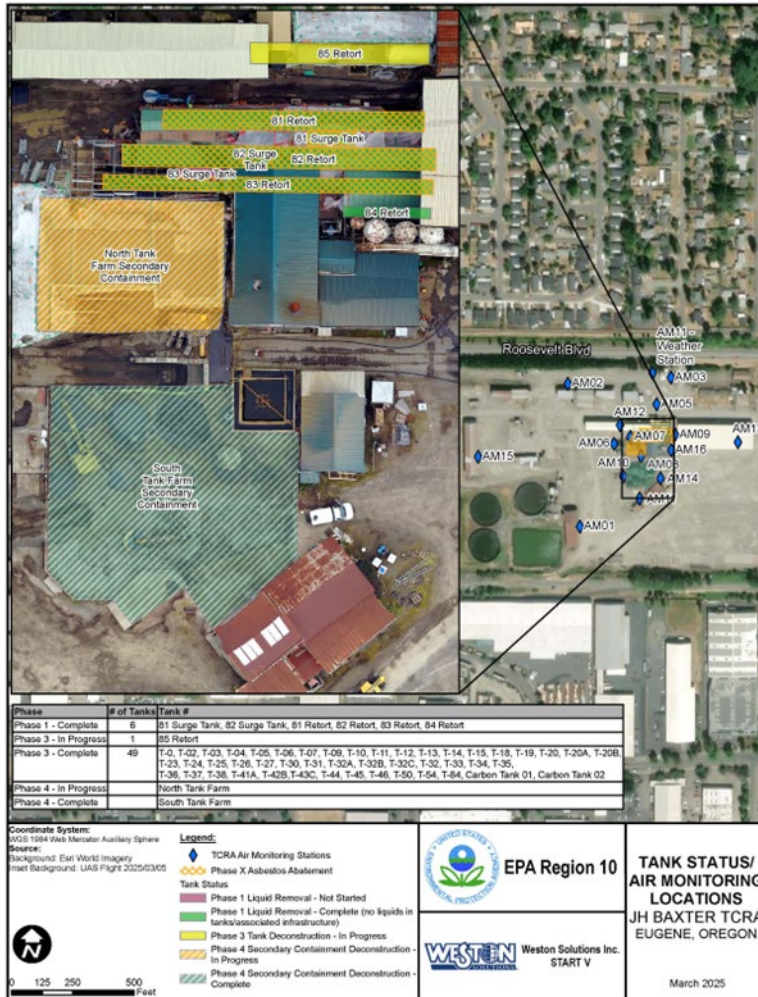
Particulate Air Monitoring Data (DusTrak) March 10-15, 2025							
Date	Air Monitoring Station	Total Run Time	Min (mg/m <sup>3</sup> )	Max (mg/m <sup>3</sup> )	Average (mg/m <sup>3</sup> )	Max TWA	Percent of Readings Exceeding 0.07 mg/m <sup>3</sup>
3/10/2025	AM03	9:39	0	0.045	0.004	0.005	0.0%
	AM11	9:39	0.001	0.716	0.015	0.018	2.4%
	AM16	9:39	0	0.04	0.004	0.002	0.0%
3/11/2025	AM03	9:38	0	0.036	0.006	0.009	0.0%
	AM11	9:38	0	0.359	0.016	0.033	1.7%
	AM16	9:38	0.001	0.461	0.012	0.013	1.3%
3/12/2025	AM03	6:12	0	0.077	0.012	0.015	0.5%
	AM06	6:12	0.002	0.033	0.006	0.006	0.0%
	AM16	6:12	0	0.049	0.002	0.003	0.0%
3/13/2025	AM03	9:29	0	0.279	0.001	0.001	0.0%
	AM06	9:29	0	0.071	0.001	0.001	0.0%
	AM16	9:29	0	0.695	0.009	0.010	2.4%
3/14/2025	AM03	9:11	0	0.357	0.004	0.007	0.5%
	AM06	9:11	0	0.649	0.01	0.030	1.0%
	AM16	9:11	0	0.101	0.006	0.019	0.4%
3/15/2025	AM03	8:01	0.001	0.015	0.004	0.004	0.0%
	AM05	8:01	0.001	0.027	0.003	0.004	0.0%
	AM06	8:01	0	0.022	0.005	0.004	0.0%
	AM15	8:01	0.001	0.303	0.04	0.076	19.6%
	AM16	8:01	0.002	0.675	0.013	0.006	4.3%

VOC Air Monitoring Data (AreaRAE) March 10-15, 2025						
	Air Monitoring Station	Total Run Time	VOC Min (ppb)	VOC Max (ppb)	VOC Average (ppb)	Percent of Readings Exceeding 5 ppm
Date						
3/10/2025	AM03	8:57	617	904	786	0%
	AM11	8:57	0	292	50	0%
	AM16	8:57	0	137	68	0%
3/11/2025	AM03	8:55	711	920	822	0%
	AM11	8:55	0	190	60	0%
	AM16	8:55	158	366	267	0%
3/12/2025	AM03	6:01	95	1051	486	0%
	AM06	6:01	101	588	261	0%
	AM16	6:01	63	633	111	0%
3/13/2025	AM03	8:38	503	789	687	0%
	AM06	8:38	0	1972	433	0%
	AM16	8:38	0	102	42	0%
3/14/2025	AM03	8:22	382	921	588	0%
	AM06	8:22	215	767	351	0%
	AM16	8:22	0	124	37	0%
3/15/2025	AM03	7:47	407	839	691	0%
	AM06	7:47	459	728	620	0%
	AM15	7:47	52	93	71	0%
	AM16	7:47	40	118	74	0%

NH3 Air Monitoring Data (AreaRAE) March 10-15, 2025						
	Air Monitoring	Total Run	NH <sub>3</sub> Min	NH <sub>3</sub> Max	NH <sub>3</sub>	
Date	Station	Time	(ppm)	(ppm)	Average	Percent of Readings
					(ppm)	Exceeding 25 ppm
3/10/2025	AM03	8:57	0	0	0	0%
	AM11	8:57	0	1	0.103	0%
3/11/2025	AM03	8:55	0	0	0	0%
	AM16	8:55	0	0	0	0%
3/12/2025	AM03	6:01	0	0	0	0%
	AM06	6:01	0	0	0	0%
3/13/2025	AM03	8:38	0	0	0	0%
	AM06	8:38	0	1	0.009	0%
3/14/2025	AM03	8:22	0	0	0	0%
	AM06	8:22	0	0	0	0%
	AM16	8:22	0	0	0	0%
3/15/2025	AM03	7:47	0	0	0	0%
	AM06	7:47	0	0	0	0%

### 2.1.3 Progress Metrics

Tank Status Map:



## Water Storage and Evaporation:

The Evaporation concentrate is collected and added to WS 5.0 for disposal

Operational Period	Run Time	Process Water Collected	Process Water Stored	Available Storage Capacity	Process Water Evaporated	Evaporation Concentrate
2/1/2025	0 hrs	NA	234,000 gal	60,000 gal	0 gal	0 gal
2/2/2025-2/8/2025	129 hrs	NA	224,623 gal	68,377 gal	8,377 gal	425 gal
2/9/2025-2/15/2025	165 hrs	NA	215,673 gal	78,327 gal	9,950 gal	475 gal
2/16/2025-2/22/2025	163 hrs	NA	205,623 gal	88,377 gal	10,050 gal	502 gal
2/23/2025-3/1/2025	143 hrs	19,000 gal	214,473 gal	79,527 gal	10,150 gal	425 gal
3/2/2025-3/8/2025	114 hrs	12,000 gal	218,973 gal	75,027 gal	7,550 gal	425 gal
3/9/2025-3/15/2025	108 hrs	30,000 gal	240,923 gal	53,077 gal	8,050 gal	425 gal
<b>Running Total</b>	<b>822 hrs</b>	<b>61,000 gal</b>	<b>240,923 gal</b>	<b>53,077 gal</b>	<b>54,027 gal</b>	<b>2,677 gal</b>

### Key:

N/A= Not Applicable, No water has been processed at this time.

gal = Gallons

hrs = Hours

EPA continues to collect and manage more water then it can evaporate. The main water collection location is the secondary containment throughout the retort area.

Disposal / recycling:

- ACM Rolloff boxes: 1
- RCRA Debris Rolloff boxes: 2
- Non RCRA Rolloff boxes: 0
- Unprepared Scrap Steel: 3
- Stainless Steel: 0
- Creosote / Penta sludge: 0